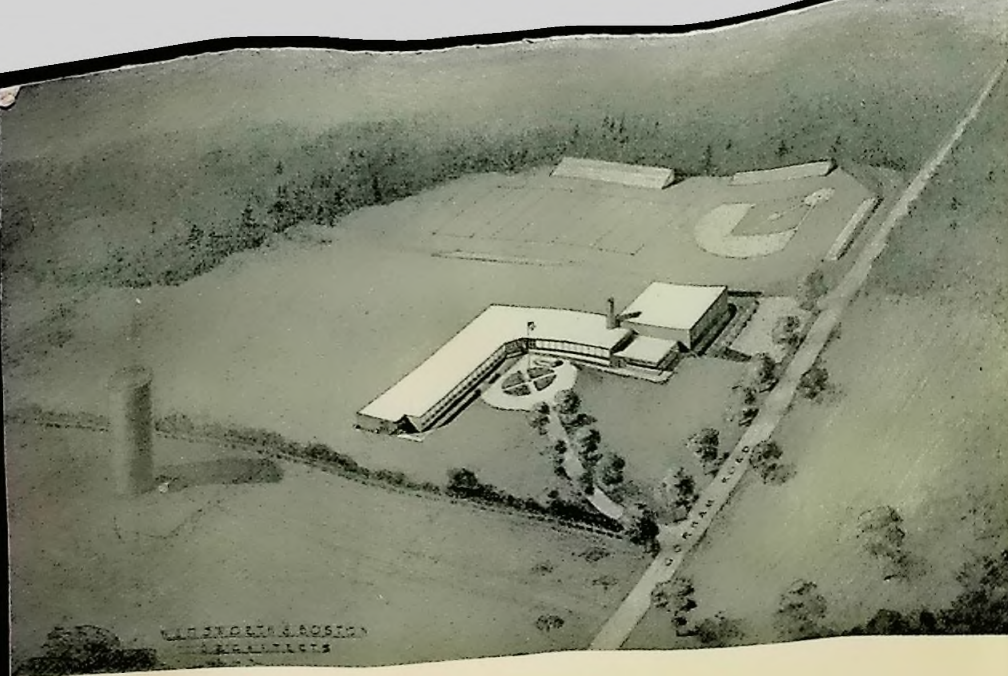


Presenting
to the
Citizens
of Scarborough
Their
New High School



Program ~ Scarborough High School
OPEN HOUSE

JANUARY 9, 1955

1:00 - 5:00 P. M.

INVOCATION

Presentation of Flag to Scarborough High School by Libby-Mitchell Post, No. 76, American Legion

Dedication of Building to the memory of Franklin H. B. Heald, Superintendent of Schools, 1913-1946

Benediction

4:00 P. M.

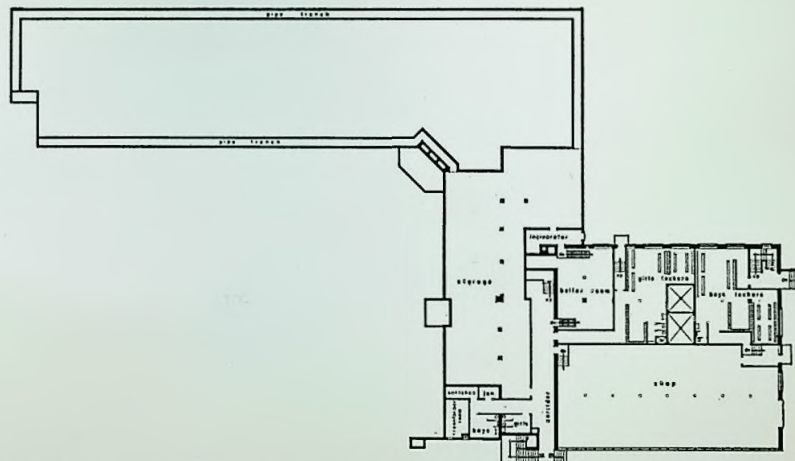
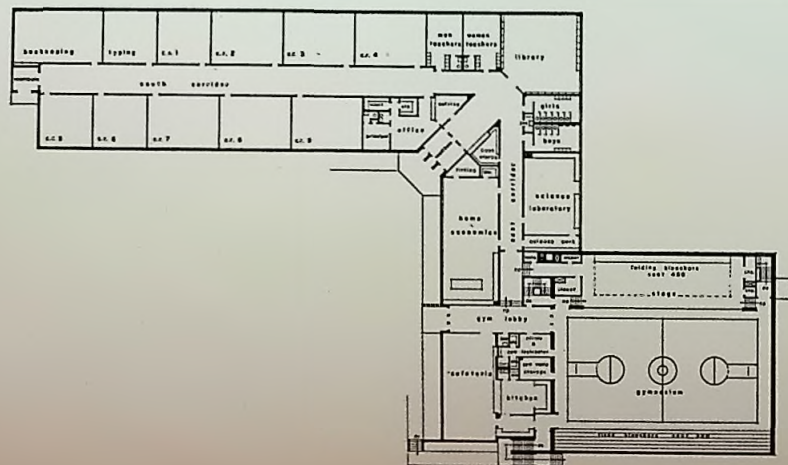
4:05 P. M.

4:15 P. M.

Refreshments will be served from two to four.

Lower Level

This portion of the building includes the industrial arts shop, locker, and team rooms, boiler room, public toilets and utility rooms.



Main Floor

This floor includes the main entrance, nine academic classrooms, the two commercial rooms, the library, the science and home economics laboratories, the teachers' rooms, the general offices, the gymnasium, and the cafeteria with its kitchen.

The new Scarborough High School replaces the former high school building which has been overcrowded for the last four years. The old building, now renamed as the Elwood G. Bessey School, has been extensively renovated and now houses grades six, seven, and eight from all sections of town, thus relieving the pressure of enrollments in both the Dunstan and Oak Hill areas.

The new high school was first planned to house 450 pupils but was reduced to a capacity of 350 following the receipt of bids because sufficient funds were not available to build the larger building. The plan is such that the present main corridor can be extended into another classroom wing, when the need arises, with a minimum of disturbance to existing facilities.

This building has been financed through the Maine School Building Authority which sponsored a bond issue of \$545,000. The Town of Scarborough appropri-

ated an additional \$28,000 from its school sinking fund. During the construction period, the sum of \$13,472.52 in interest on unexpended funds, has accrued for use on the project.

The gross sum of \$539,441.80, exclusive of prepaid financing charges, legal fees, and insurance, was available for the purchase of site, construction of the building and purchase of equipment. To the present date a total of \$530,244.72 has been expended or contracted for. This leaves a clear balance of \$9,197.08 in the account for additional equipment for increased enrollments in the next five years.

The building is of basic cinder block construction with brick veneer facing, steel sash, glass block, and a heavily insulated roof supported by exposed bar joists. This type of construction was recommended by the architects, after extensive study, as producing the greatest volume of usable building for the money expended.

Planning For The Future

The people of Scarborough have a right to be proud of this fine new building, but should not believe that it will solve the school housing problems indefinitely. The building committee built the largest building possible with the funds available. The building has a capacity of 350 students, with a present enrollment of 243. If there is no change in the number of pupils in the four lowest grades of the elementary school, a high school enrollment of over 500 is expected in nine years. For that reason, future expansion of this building, as well as other school buildings, must be expected.

The building committee expresses its appreciation of the fine cooperation by the architects and contractors during the two years of planning and construction.

Scarborough School Building Committee

GEORGE H. STANFORD, *Chairman*

NORMAN D. HARMON

JERE HICKEY

LINWOOD R. HIGGINS

EVERETT S. KIMBALL

R. LEON LARY

GEORGE H. MILLIKEN

F. CHESTER MITCHELL

GERALD T. PILLSBURY

J. ROSS SHERWOOD

ROBERT B. LUNT, *Secretary*

WADSWORTH AND BOSTON, *Architects*

BROWN CONSTRUCTION COMPANY, *General Contractor*