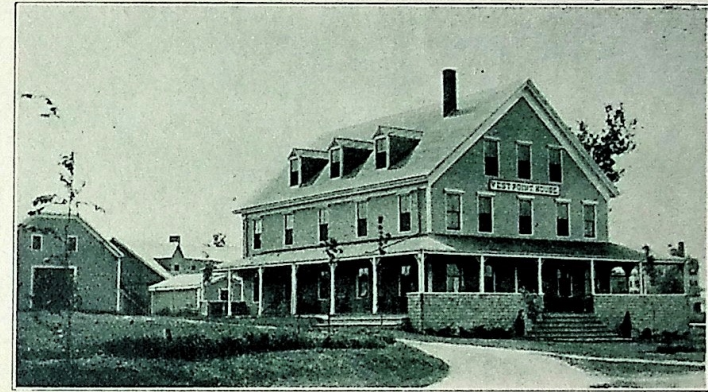
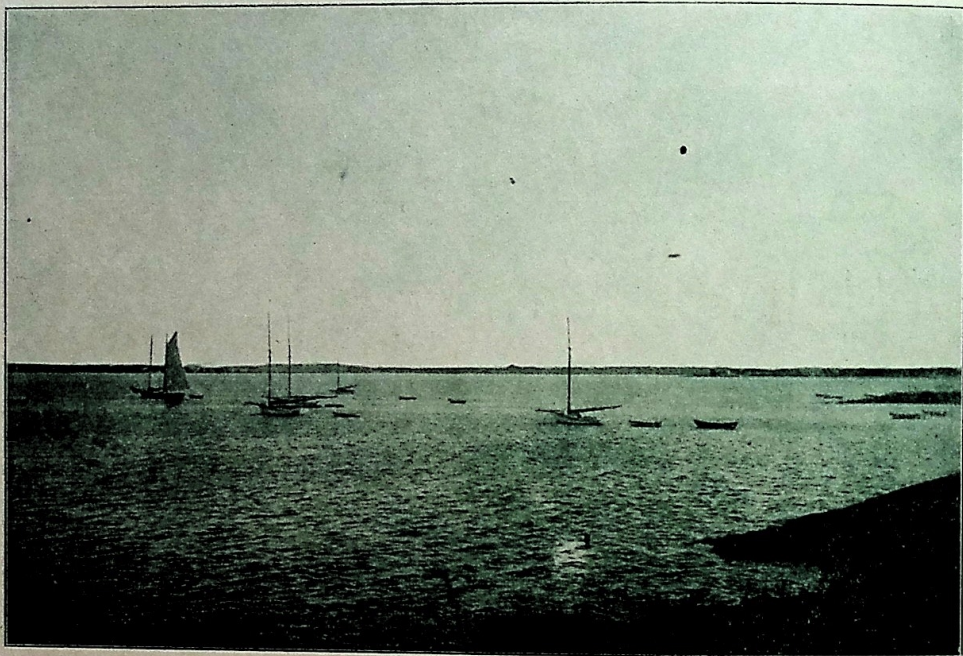


West Point House

Prout's Neck, Maine





YACHT ANCHORAGE

WEST POINT HOUSE

PROUT'S NECK, MAINE



R. R. JORDAN
PROPRIETOR



WEST POINT HOUSE

Prout's Neck

THIS picturesque neck of land extending into Saco Bay has long been visited by many summer people who find comfort in the cool, refreshing sea breezes which help to make a summer vacation enjoyable, as well as the scenery along the bold shore on the side, looking straight to sea, and the long stretches of sandy beaches on the mainland adjoining affording excellent opportunities for surf bathing as well as amusement for the children, the water being warmed in flowing over the long, white, sandy beaches, and the beaches at low tide offering a firm footing for persons desiring a cool walk away from traveled roads.

Prout's Neck is almost entirely surrounded by water, being connected with the mainland by a narrow strip of land. This gives a comfortable atmosphere in the summer time without regard to the direction of the wind. Many pleasant groves of trees may be found on the adjoining mainland as well as those on Prout's Neck itself, and the salt-water marshes that may be seen on the way from the station to Prout's Neck present a never-ending variety of colors in the latter part of the summer, making many pretty rides and automobile drives. These marshes afford fine opportunities for the sportsman, as does Saco Bay, which is the feeding ground for many varieties of sea ducks.

The West Point House is situated on the western point of Prout's Neck, the front of the house facing a northerly direction. From the piazza and rooms on this side a view may be obtained of Saco Bay, bordered by Old Orchard Beach and Pine Point, with summer cottages situated near the beaches and high wooded hills dotted with



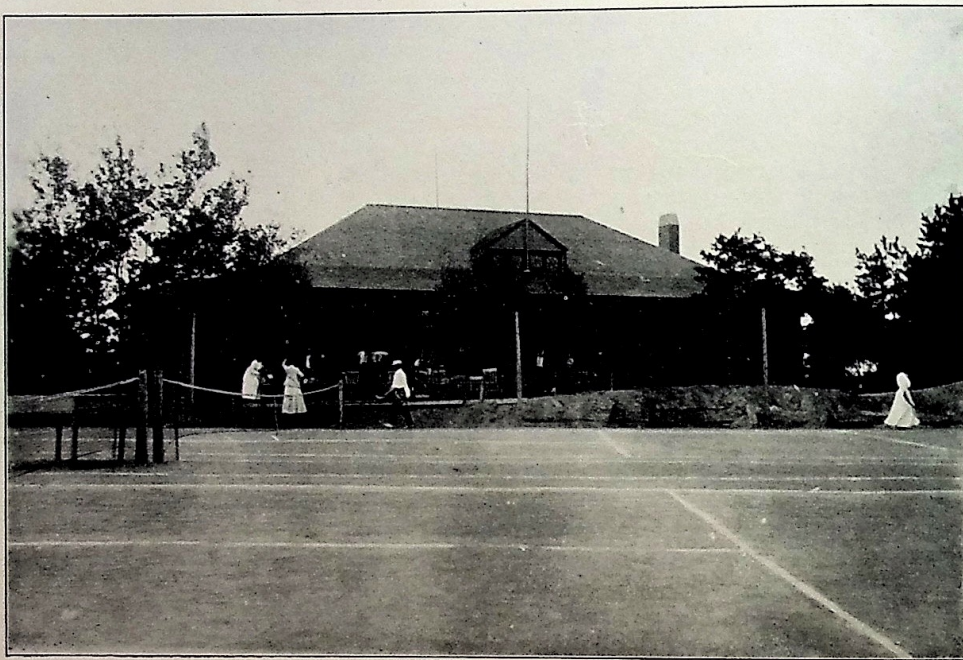
farms in the background; also the outlet of numerous small streams winding their way through groves of trees and grassy marshes, and finally through a long stretch of sandy beaches to Saco Bay. Following the piazza toward the westerly side of the house the yacht anchorage may be seen, with a clear view across Saco Bay for ten miles toward Wood Island Light and Biddeford Pool. Through Saco Bay are scattered a number of small islands, making an ideal place for sailing, fishing and rowing, and on this side the cool southwest sea breezes, which prevail in the summer time, may be obtained while strolling back and forth on the piazza, and in the evening the sun may be seen setting behind the wooded hills beyond Saco Bay.

There are Golf Links, Tennis Courts, and a Country Club House only a short walk from the West Point House, the privileges of which are allowed guests at the hotel by the Prout's Neck Association on payment of dues for the season.

For the accommodation of automobiles and chauffeurs the hotel has a fire-proof garage of brick, iron and concrete construction, with a machine shop and automobile supply house connected with it. The chauffeurs' rooms are light and airy and furnished with comfortable beds with hair mattresses. The garage has a touring car for automobile parties.

Guests will be met at the station and driven to the hotel provided proper notice is given of the time of their arrival. The amount of baggage to be brought should be stated as near as possible so that the management will be able to forward the baggage to the hotel without delay.

The house is equipped with electricity, modern plumbing, and steam heat, four of the rooms having private baths; dairy and farm products are supplied from its own farms, not far distant. The aim of the management is to supply good, wholesome,



COUNTRY CLUB HOUSE

well-cooked food in satisfying quantities, and is employing the best of help to meet these conditions. A number of physicians of high standing reside at Prout's Neck during the summer so that medical attendance if desired may be obtained at a few minutes' notice.

Children will be charged the same as adults for the privileges of the hotel. No dogs will be allowed in the hotel, but they may be kept in the barn and a charge by the week will be made for their care and food.

The management will consider it a favor if guests will report immediately any incivility from any employee of the hotel. The management also reserves the right to exclude any undesirable parties from the use of the privileges of the hotel.

Prout's Neck is about twelve miles from Portland and is reached from Boston by the Boston & Maine Railroad via Dover, getting off at Scarboro Beach. During the summer Pullman sleepers run from New York and Montreal direct to Scarboro Beach and Portland, and from Portland trains run to Scarboro Beach by the Boston & Maine Railroad.

In writing for information about rooms, the times of arrival and departure should be stated, also whether one person or more persons are to occupy the rooms. For any further information address

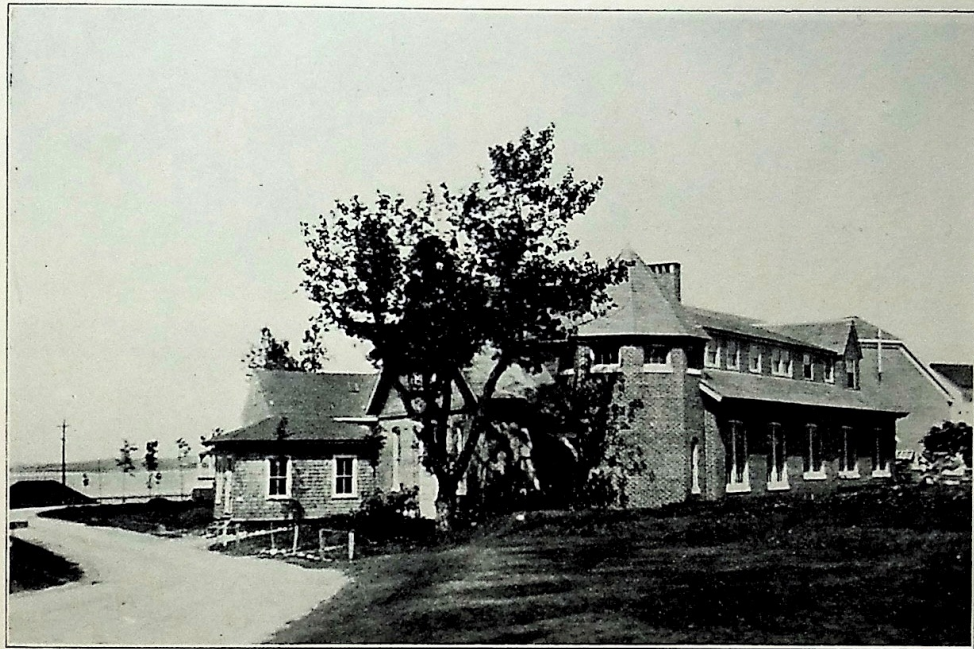
R. R. JORDAN,

Railroad Station, Scarboro Beach,
Boston & Maine Railroad via Dover.

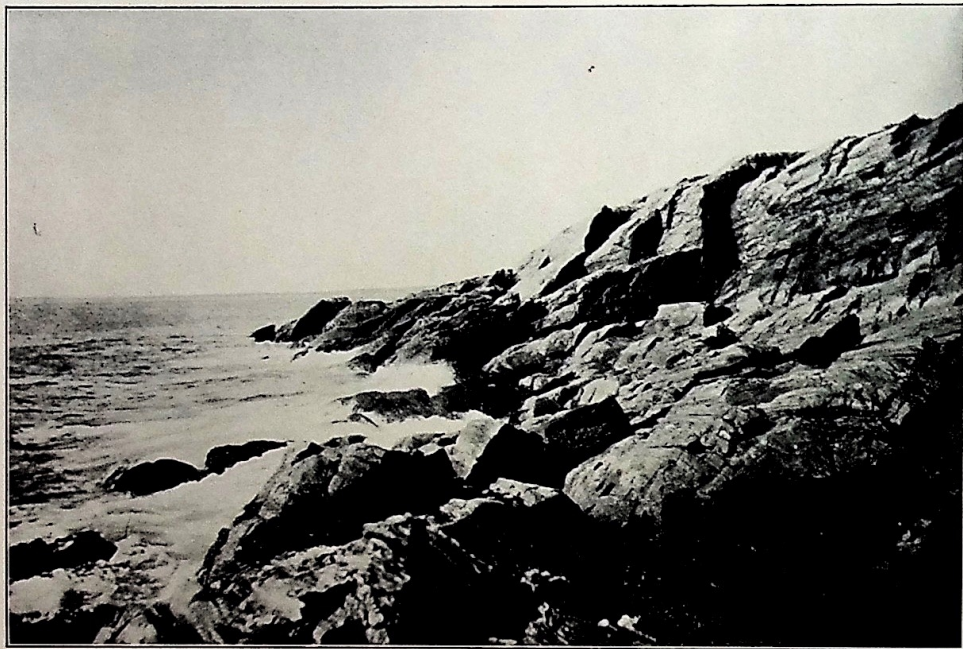
West Point House,
Prout's Neck, Maine.



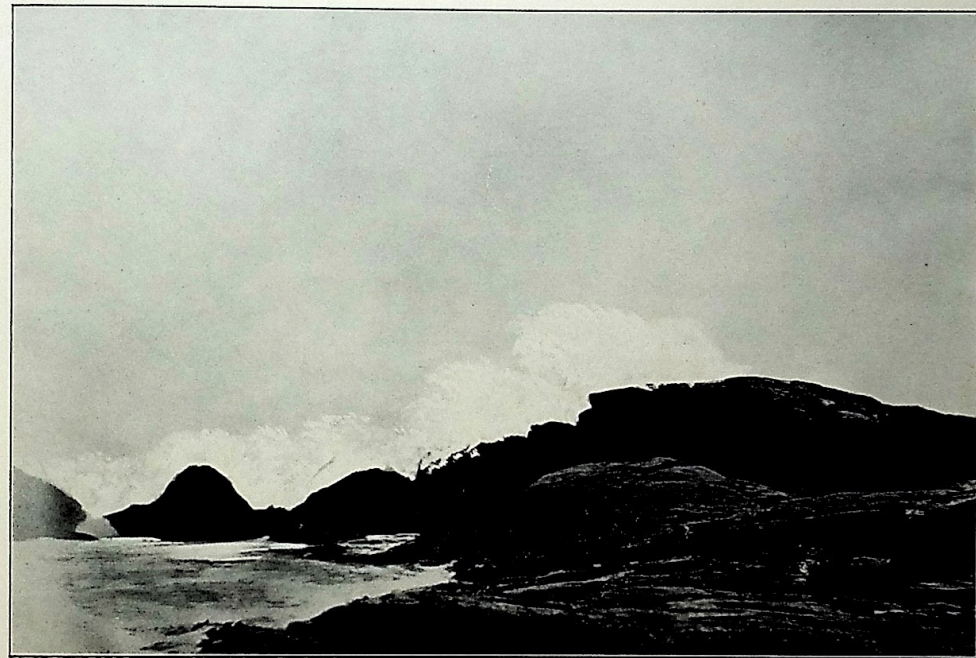
THE BATHING BEACH



WEST POINT HOUSE GARAGE



THE CLIFFS



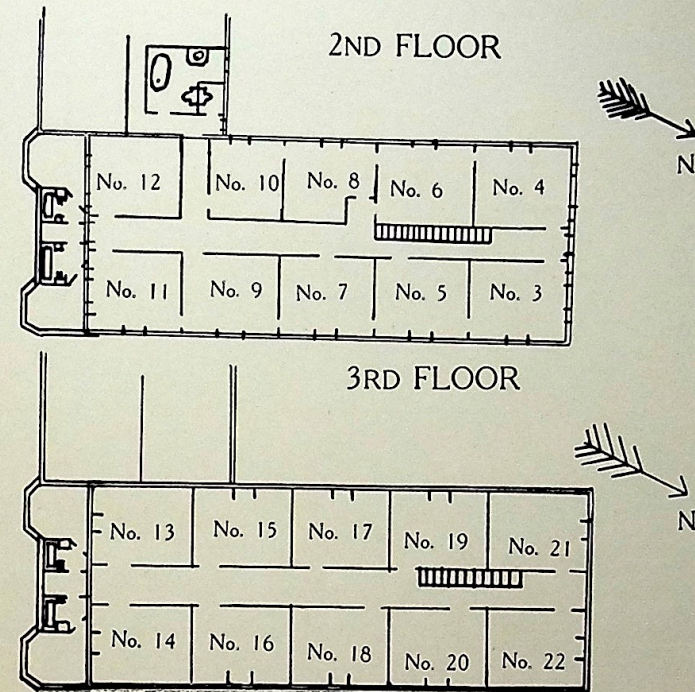
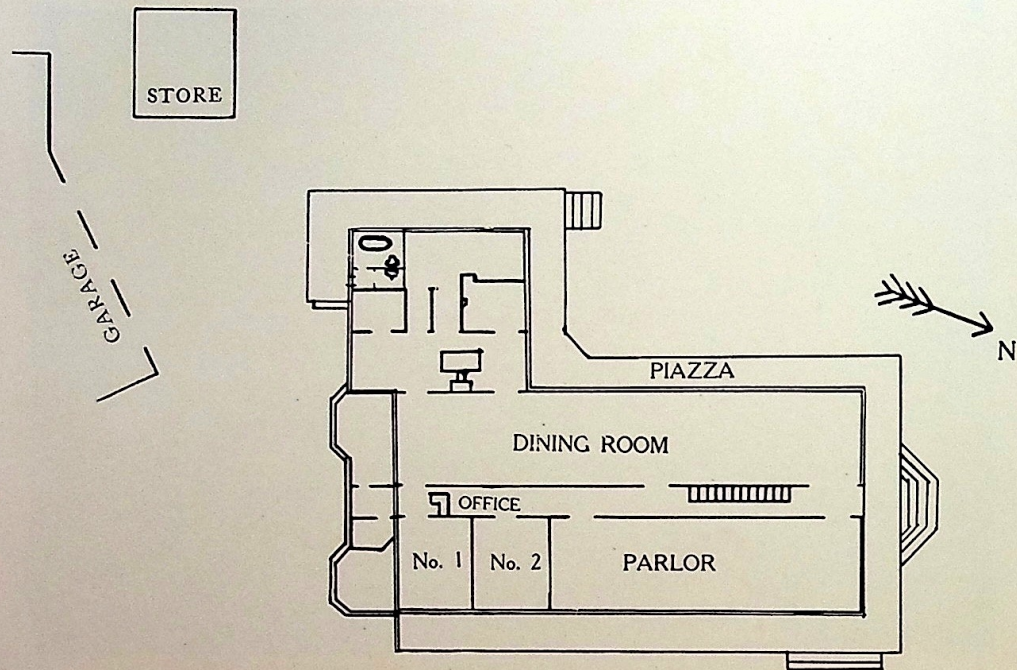
SURF FROM CLIFFS

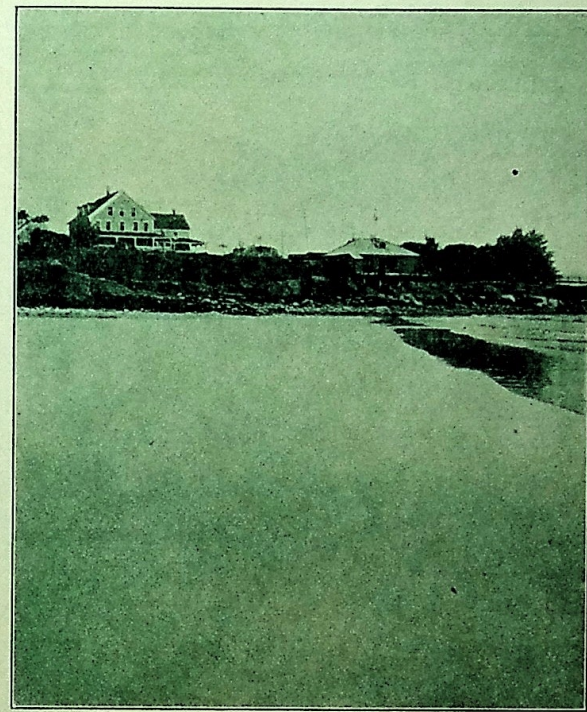
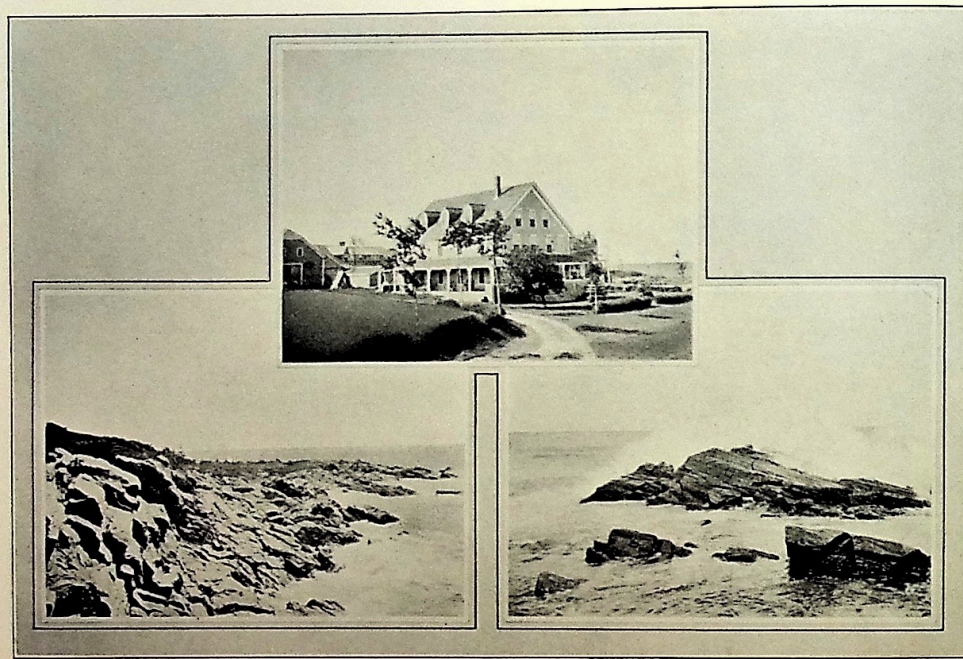


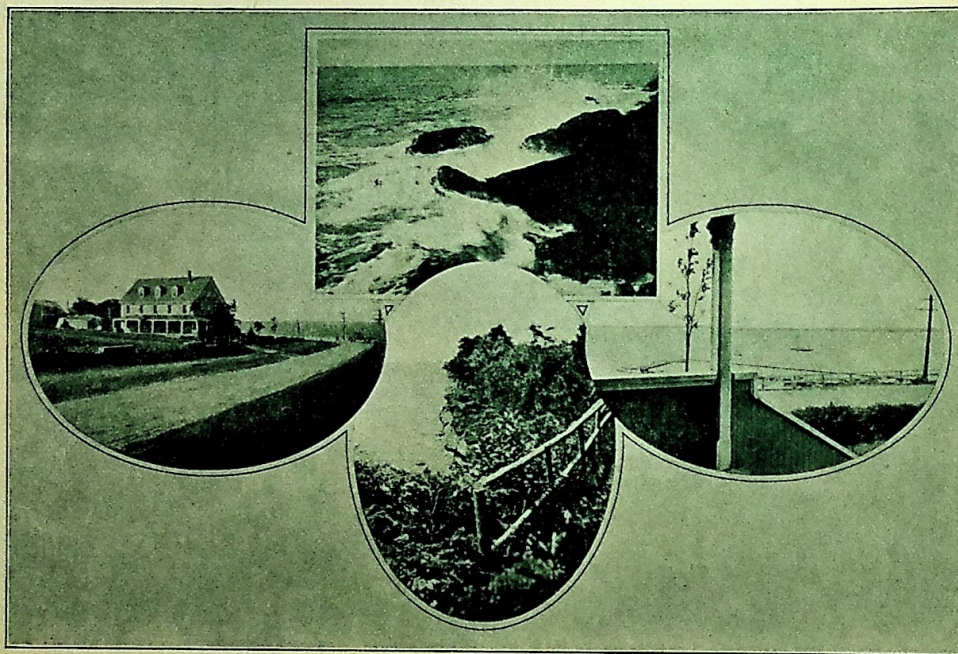
WALK THROUGH THE WOODS



THE SANCTUARY







West Point House

Prout's Neck, Maine

