

The Checkley

PROUT'S NECK, MAINE

Mr. (Mick)

THE CHECKLEY

Ira C. Foss Estate

Mary H. Foss, Proprietress

PROUT'S NECK, MAINE

OPEN FOR THE SEASON, JUNE 25



The Checkley, Prout's Neck, Maine

PROUT'S NECK



LOCATED on the Coast of Maine, about ten miles from Portland, has for many years been an attractive resort for summer tourists. A peninsula running into the sea, connected to the mainland by a narrow strip over which runs the highway, its situation insures in the hottest weather a cool sea breeze, while its pleasant walks through the evergreens, its unequaled facilities for bathing and fishing, make it one of the most delightful of all Maine's famous resorts. The Checkley is situated well out on the point, in a position commanding a most extensive view of sea and shore. From its broad piazzas can be seen the beach at Old Orchard, across the bay, and the line of coast from Pine Point to Biddeford Pool and beyond, and the view of the open sea is unsurpassed.

The Checkley is fitted and furnished with all the comforts and conveniences which make life pleasurable.

Its sleeping apartments are airy, well ventilated, many of them have private baths, and all are furnished with the best of beds and bedding, and every room commands a fine view.

Pleasant parlors and a most attractive office with its cosy corners and ample fireplaces, will be fully appreciated.

The physician who has been at The Checkley for several seasons will be there this year.



The Bathing Beach at Prout's Neck

The dining room is a fine airy room, forty-two by sixty-three feet, situated on the ground floor, its windows opening upon the sea. A feature of the room is the big plate glass window facing the entrance, giving a broad view of the ocean. The table is supplied with an abundance of fresh vegetables from The Checkley Farm, with rich, pure milk from a fine herd of cows. Fish and clams can be had at all times. The house has always been noted for the excellence of its cuisine and this reputation will be maintained. The house is lighted by electricity and equipped with electric bells, etc.

The Checkley receives its water supply from the justly famed Sebago Lake. This lake is situated among the foothills of the White Mountains sixteen miles from Portland and has an area of almost one hundred square miles. As the City of Portland also receives its water supply from Sebago Lake every necessary precaution is taken to maintain its purity. The house is well protected from fire, having hose on each floor connected with a tank holding over sixty-six thousand gallons of water. Special attention has been devoted to drainage and sanitary arrangements, the best of plumbing appliances being used throughout, and all the drainage is carried to low water mark at a point far from the hotel.

The baths are supplied with fresh and salt water, so that any one who cannot endure the shock of bathing in these Northern waters can obtain all the benefits of the salt water without leaving the house. For bathing there is no better place, as one may have the smoothest of water for still bathing, or, if the more exhilarating surf is desired, it is only a few rods away across the Neck. A lifeboat, managed by a capable man, is on duty during bathing hours. Both beaches are of smooth, white sand, hard and firm. If you wish to sail upon the broad swell of the ocean, there are sailboats and yachts at command, with



Bathing Houses at the Beach

experienced boatmen in charge ; or, if you prefer a quiet pull over the smooth water and up the Scarboro River, there are fine row boats to be obtained. If you find pleasure in fishing, you will get the best of cunners from the rocks back of the hotel, or you can take a boat and find good fishing a few rods away from shore. A new wharf with floating landing has been built near the house recently, and will add much to the convenience and pleasure of boating.

Automobilists will find every convenience for their enjoyment. Besides the many beautiful drives in the immediate vicinity of Prout's Neck, there radiates from a point only four miles from The Checkley, over a fine road, all the State improved highways. Among the points of interest that may be reached in a day's run with ample time for return before evening are Portland, Poland Springs, Old Orchard, Biddeford Pool, Sebago Lake, New Meadows Inn, Orrs Island, Harpswell, Kennebunkport, York Harbor, Boothbay Harbor, Bridgton.

A new fireproof garage in connection with the house has been erected for the convenience of our guests, where automobiles may be had.

The Prout's Neck Country Club gives every opportunity for those enjoying golf, tennis, etc. The Country Club has recently made extensive improvements on its links and now offers the golf enthusiast a fine 18-hole course.

It is the aim of the proprietor to provide in every way for the comfort and amusement of the guests, and the most courteous attention is given to all. The popularity of the house is attested by the fact that for years it has retained the patronage of many people who annually make a pilgrimage to this most pleasant of summer resorts.



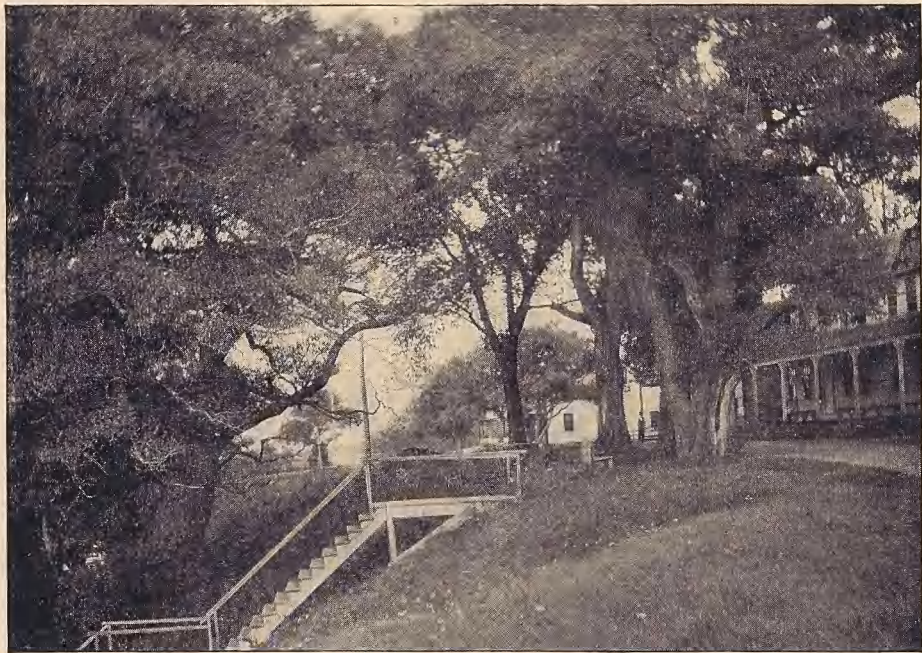
Under the Willows—Country Club in the Distance



The Checkley House from the Ocean Side



Woods at Prout's Neck



On the Road to The Checkley



Yacht Mooring in Front of The Checkley

To reach the Neck take the Boston & Maine, Western Division to Scarboro Beach Station. Passengers from Montreal and points in the White Mountains can, via the Maine Central Railroad, take a through car during the summer season which runs from Montreal through to Scarboro Beach Station, also via the Grand Trunk Railway System, which runs through Pullman parlor cars on day trains and through sleeping cars on night train, or by the Canadian Pacific and Maine Central Railroads, through the White Mountains and Portland. The Checkley is reached from the South and West by the New York Central lines and their connections to Boston and thence via Boston & Maine Railroad, Western Division. Commencing about June 12th there will be a sleeping-car train between New York and Portland running through without change via New Haven, Putnam and Worcester, leaving New York at about 7.30 P. M., except Sundays, stopping at Scarboro Beach. Automobiles will always be found waiting for the pleasant drive of four miles to the hotel.

In response to the request of many of our patrons, The Checkley will open June 25, and will remain open in September, as late as patronage warrants.

All correspondence should be addressed to

Mary H. Foss, Proprietress

"The Checkley," Prout's Neck, Maine.

Rates, \$3.50 to \$9.00 per Day.

Dogs not allowed.

Long Distance Telephone

Western Union Telegraph



The Ocean Side, Prout's Neck



Tennis at the Country Club



View of Rocks from Piazza at The Checkley



Surf at Prout's Neck



Drive on Prout's Neck, Richmond Island in the Distance



Prout's Neck Country Club

