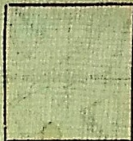


*The*  
**Checkley**

# Souvenir Letter

Prout's Neck, Maine





# THE CHECKLEY

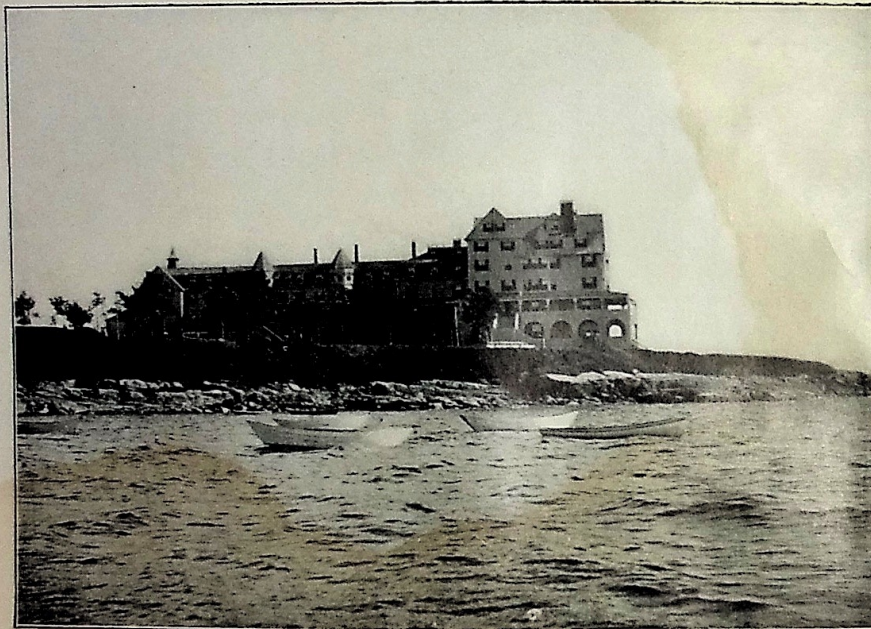
OPEN FOR THE SEASON, JUNE 24



IRA C. FOSS  
PROPRIETOR

PROUT'S NECK  
MAINE





The Checkley, Ira C. Foss, Proprietor



## PROUT'S NECK



LOCATED on the Coast of Maine, about ten miles from Portland, has for many years been an attractive resort for summer tourists. A peninsula running into the sea, connected to the mainland by a narrow strip over which runs the highway, its situation insures in hottest weather a cool sea breeze, while its pleasant walks through the evergreens, its unequaled facilities for bathing and fishing, make it one of the most delightful of all Maine's famous resorts. The Checkley is situated well out on the point, in a position commanding a most extensive view of sea and shore. From its broad piazzas can be seen the beach at Old Orchard, across the bay, and the line of coast from Pine Point to Biddeford Pool and beyond, and the view of the open sea is unsurpassed.

The Checkley is fitted and furnished with all the comforts and conveniences which make life pleasurable.

Its sleeping apartments are airy, well ventilated, some of them have private baths and all are furnished with the best of beds and bedding, and every room commands a fine view.

It has a music hall, pleasant parlors and a most attractive office, which with its cozy corners and ample fireplaces will be fully appreciated.





Bathing Beach at Prout's Neck

The physician who has been at The Checkley for the past ten seasons will be there this year.

The dining room is a fine, airy room, forty-two by sixty-three feet, situated on the ground floor, its windows opening upon the sea. A feature of the room is the big plate-glass window facing the entrance, so arranged that the effect as one enters is that of a picture. The table is supplied with an abundance of fresh vegetables from The Checkley Farm, with rich, pure milk from a fine herd of cows. Fish and clams can be had at all times. The house has always been noted for the excellence of its cuisine and this reputation will be maintained. The house is lighted by electricity and equipped with electric bells, etc.

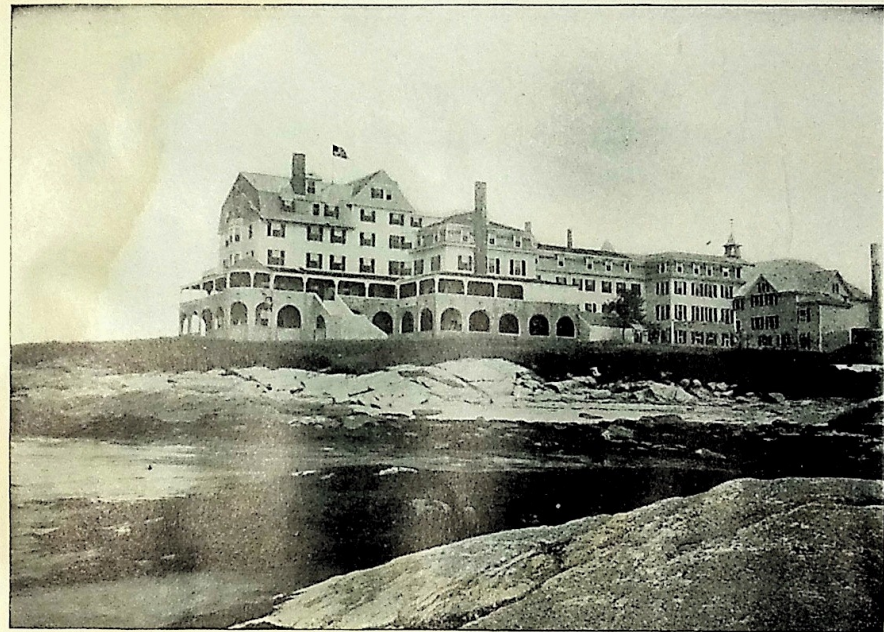
An abundance of pure water is obtained from a spring located about one mile from The Checkley. The water from this spring comes out of clean, white sand, and is absolutely free from any possible contamination. The house is well protected from fire, having hose on each floor connected with a tank holding over sixty-six thousand gallons of water. Special attention has been devoted to drainage and sanitary arrangements, the best of plumbing appliances being used throughout and all the drainage is carried to low-water mark at a point far from the hotel.

The baths are supplied with fresh and salt water, so that any who cannot endure the shock of bathing in these Northern waters can obtain all the benefits of the salt water without leaving the house. For bathing there is no better place, as one may have the smoothest of water for still bathing, or, if the more exhilarating surf is desired, it is only a few rods away, across the Neck. A lifeboat, managed by a capable man, is on duty during





Shore View from Piazza of The Checkley



The Checkley from the Rocks





Woods at Prout's Neck

bathing hours. Both beaches are of smooth, white sand, hard and firm. If you wish to sail upon the broad swell of the ocean, there are sailboats and yachts at command, with experienced boatmen in charge; or if you prefer a quiet pull over the smooth water and up the Scarborough River, there are fine rowboats to be obtained. If you find pleasure in fishing you will get the best of cunners from the rocks back of the hotel, or you can take a boat and find good fishing a few rods away from shore. If driving gives you more pleasure you will find a stable well supplied with teams, with careful and experienced drivers, and there are many beautiful drives to points of interest in the surrounding country. Golf and tennis may also be enjoyed. It is the aim of the proprietor to provide in every way for the comfort and amusement of the guests, and the most courteous attention is given to all. The popularity of the house is attested by the fact that for years it has retained the patronage of many people who annually make a pilgrimage to this most pleasant of summer resorts.

To reach the Neck take the Boston & Maine, Western Division, to Scarborough Beach Station. Passengers from Montreal and points in the White Mountains can, via the Maine Central Railroad, take a through car during the summer season which runs from Montreal through to Scarborough Beach Station, also via the Grand Trunk Railway System, which runs through Pullman parlor cars on day trains and through sleeping cars on night trains, or by the Canadian Pacific and Maine Central Railroads, through the White Mountains and Portland. The Checkley is reached from the South and West by the New York Central lines and their connections to Boston and thence via Boston & Maine Railroad, Western Division. Commencing about June 12th there will be a sleeping-car train between New York and



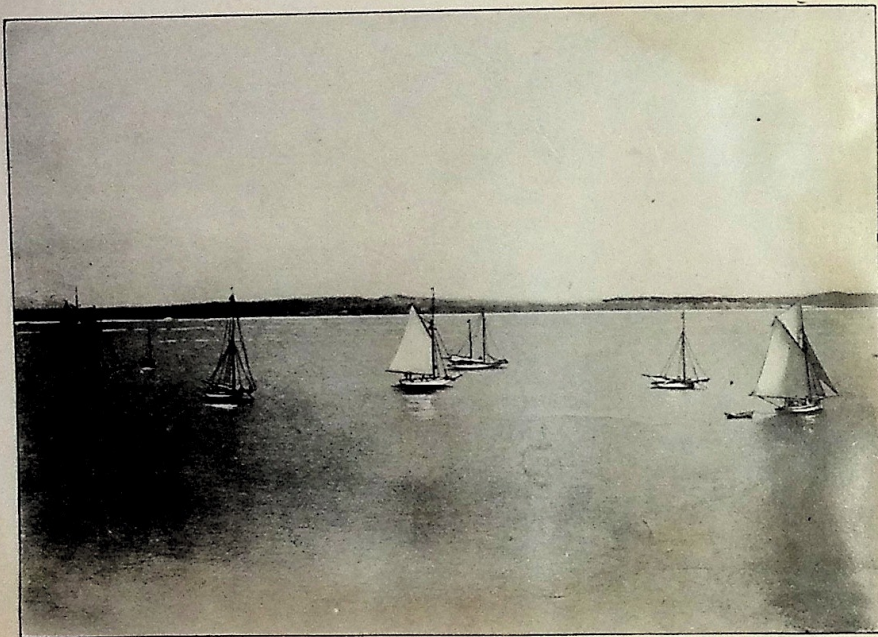


On the Road to The Checkley



View of Rocks from Piazza of The Checkley





Yacht Mooring in front of The Checkley

Portland, running through without change via New Haven, Putnam and Worcester, leaving New York at about 8.00 p. m., except Sundays, arriving in Portland 6.30 a. m., connecting with trains for Scarboro Beach. Carriages will always be found waiting for the pleasant drive of four miles to the hotel. Passengers on the Eastern Division will stop at Scarboro Station and, by telegraphing Scarboro Beach, can obtain carriages in a few minutes.

Full information regarding this hotel and the best train upon which to reach it can be obtained at all New York Central ticket offices in New York, Brooklyn, Buffalo and Niagara Falls and at the principal city ticket offices of the New York Central, Boston & Albany, Michigan Central, Lake Shore, Big Four, Pittsburg & Lake Erie and Lake Erie & Western Railroads.

All correspondence should be addressed to

IRA C. FOSS,

"The Checkley," Prout's Neck, Maine.

Rates, \$3.00 to \$5.00 per Day.

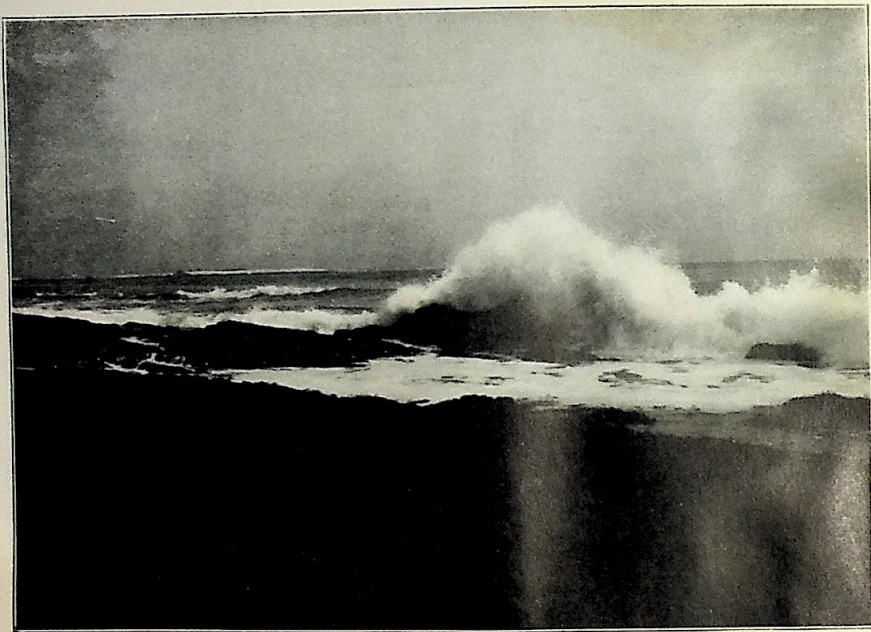
Long Distance Telephone.

Hebrews will please not apply.

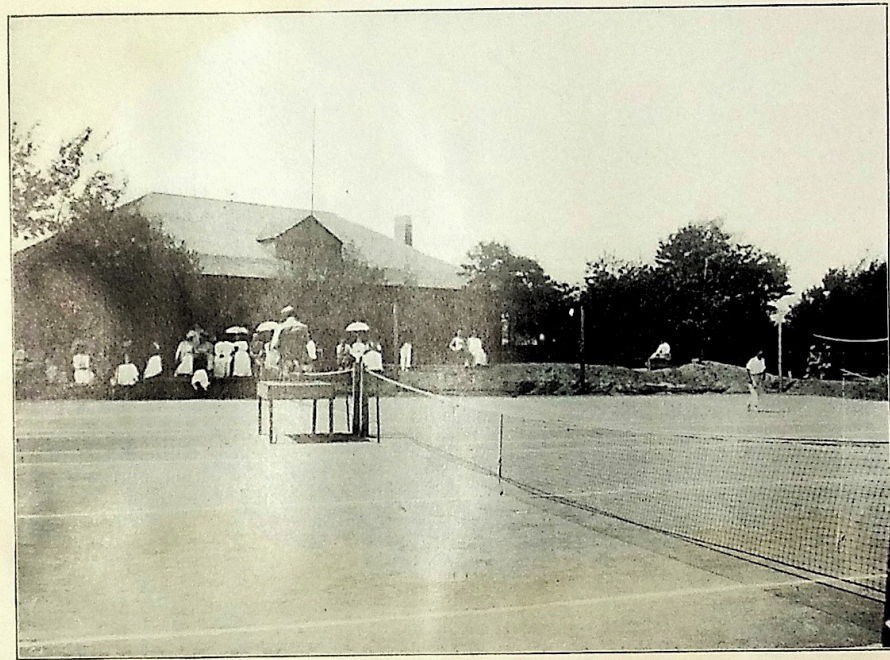
Western Union Telegraph in office.

Dogs not allowed.





View from East Side of Prout's Neck



Prout's Neck Country Club





View of Shore on Ocean Side of Prout's Neck, from The Checkley Piazza

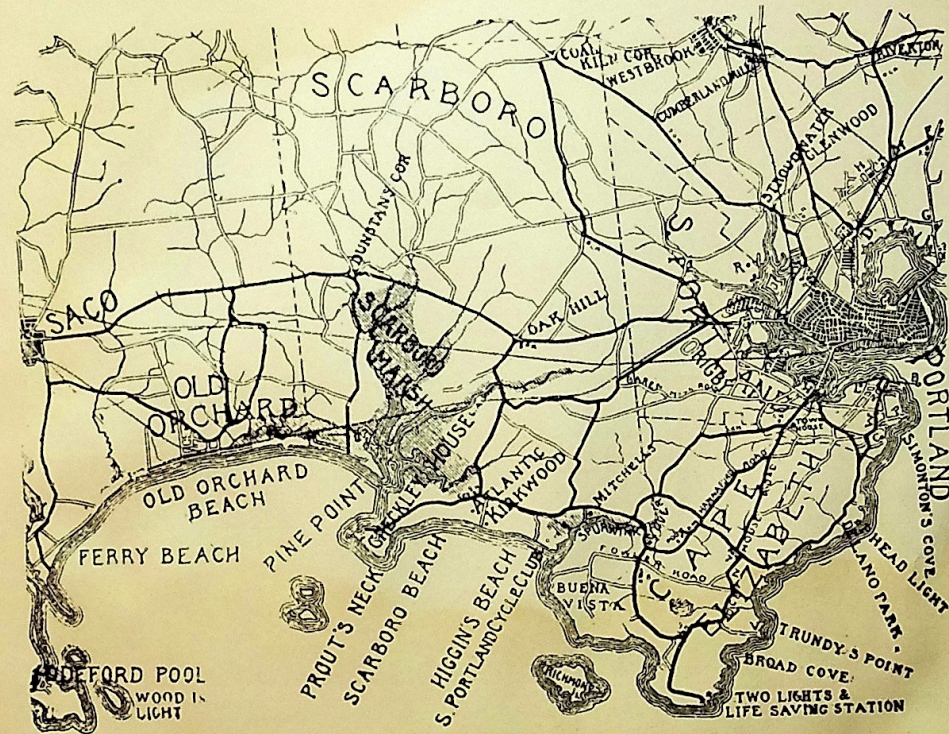


Surf at Prout's Neck

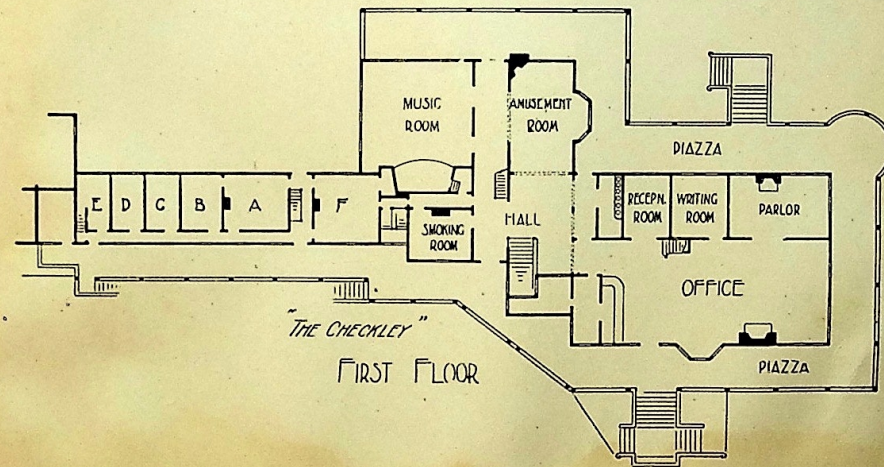
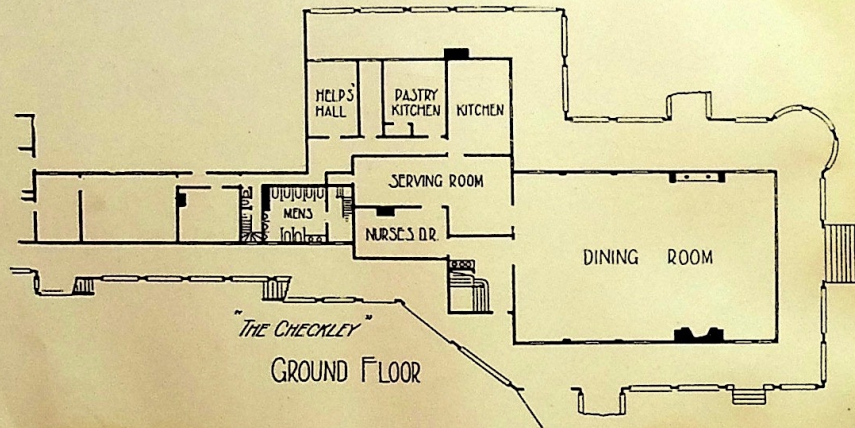




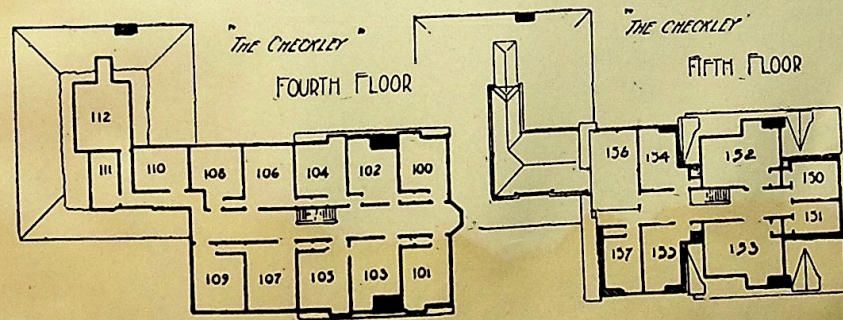
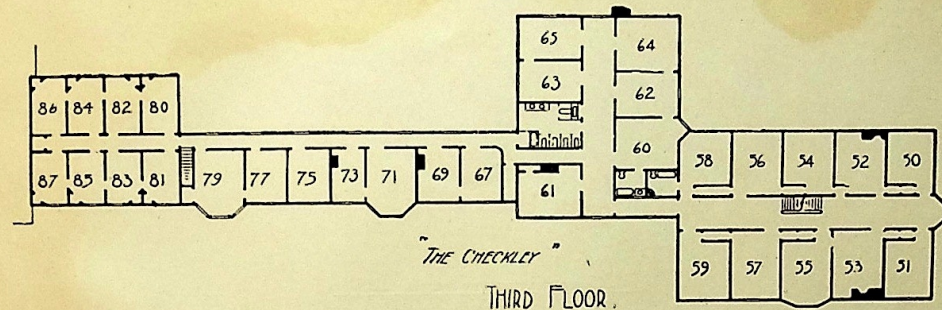
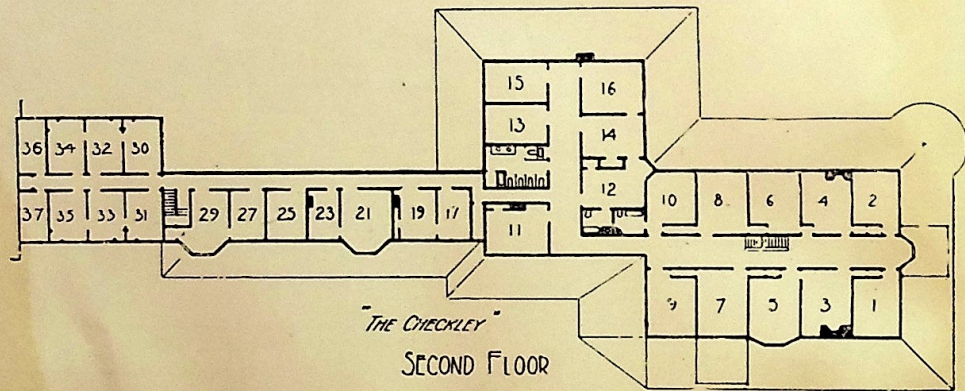
Drive on Prout's Neck, Richmond's Island in the Distance













---

LAKESIDE PRINTING COMPANY  
PORTLAND, ME.

---



2-5139

3-9247