

BLACK POINT INN

PROUT'S NECK, MAINE.

03.82.38

BLACK POINT INN

at Prout's Neck, Me.

MRS. S. F. BOYD, Manager



BLACK POINT INN

PROUT'S NECK (its original name was Black Point, so called from its large growth of hemlock, white pine and fir trees) is ten miles south of Portland, and is one of the most delightful and retiring summer Cottage Colonies on the Maine coast. Its area of 110 acres, one-third of which is taken up by the Sanctuary woods and its marginal way, is pear shaped. The south and southwest coast has high rocks and rugged cliffs, with an inner bay on the west, and on the northwest is the narrow bottle-shaped approach, with one of the finest bathing beaches running eastward for approximately three miles. For many years Prout's Neck has been a resort favored by people of refinement and discrimination. Along the shore are many charming cottages.

An up-to-date, 6,000 yard, eighteen hole golf course runs along the sand dunes, through the woods, across the marshes, again to the dunes and back, and no expense has been spared in making it attractive. It has been said that for natural beauty, with its view of the marshes, woods and water, it is unrivaled on the coast.

A special feature is a putting green attractively situated close by the hotel.

The Country Club is the center of the summer activities, and its club house, with eight tennis courts, is within three minutes' walk of the Inn.



Lounge and Entrance to Living Room

BLACK POINT INN — a distinctive hotel — has been built to accommodate the class of people who are attracted to Prout's Neck by its golf, bathing, sailing and other interesting features.

This is a small hostelry of about sixty rooms, facing the west and inner bay, within 400 yards of the first tee and eighteenth green, and about 300 yards from the bathing beach. Practically every room in the Inn has a water view, while the sunsets from the west porch, across the bay with the White Mountains in the distance, once seen will long be remembered. Every room is tastefully furnished, has hot and cold running water, bath connection and a long distance telephone.

An elevator connects all floors.

The lobby and living room are furnished with every convenience for the comfort of the guests, and on cool days heat is provided in addition to the open fireplaces.

The porches are spacious, including a charmingly furnished glazed porch. The dining room is most attractively decorated, and with its large fireplace and plate glass windows makes a most fitting place for the enjoyment of the fine cuisine.

Our flowers, vegetables, poultry, dairy products, and fruit in season, are obtained from the nearby model showplace, Ram Island Farm. The kitchen is supplied with all modern sanitary equipment, tiled floor and walls, and electric refrigeration.



Corner of Dining Room, Looking Towards Bathing Beach

BLACK POINT RIDING CLUB offers splendid opportunities for horseback riding. There are miles of interesting bridle paths, and excellent saddle horses are available, with or without groom service. Owners may also board horses here with the certainty that they will receive expert care.

Trap shooting is another feature which is enjoyed by guests of the Inn.

BLACK POINT INN is about 110 miles by motor from Boston via the Newburyport Turnpike and the Post Road, a very picturesque and interesting route. Or, one can leave Boston via the North Shore and follow through to Rye Beach, York Harbor, York Cliffs, Ogunquit, Kennebunkport, Fortune Rocks, Biddeford Pool and on to Prout's Neck, a matter of approximately 150 miles. This trip is undoubtedly the finest automobile trip on the Atlantic coast. The Inn is about ten miles from Portland, and a night's ride on the sleeper from New York. Trains leave New York about 8 o'clock in the evening and arrive at Scarborough Beach Station at 6.30 the following morning. It is about two hours' run from Boston on the Boston and Maine Railroad.



Living Room

From BLACK POINT INN one can motor to Bretton Woods, have luncheon and return in time for dinner. It is approximately forty miles to Poland Springs where one can motor, golf, lunch and golf again, and return for dinner, either direct or via the shore route, in both cases, over good, attractive roads.

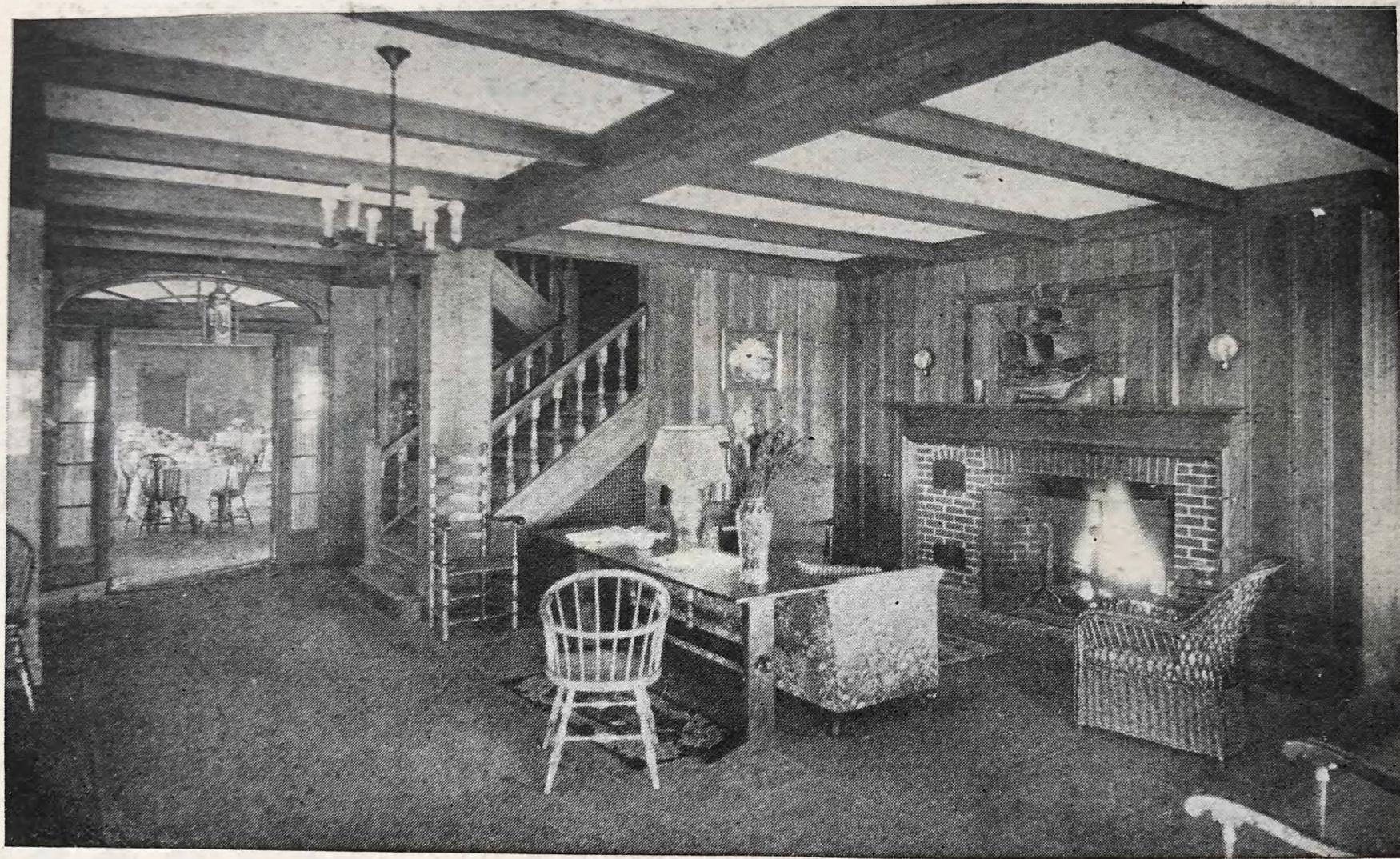
The Balsams at Dixville Notch, the Samoset at Rockland, and Bar Harbor are all within reasonable motoring distance. Lake Winnepesaukee, Moosehead, the Rangeleys, and various other points of interest are all within a short or a long day's journey as one may elect. For short motoring trips, we have Kennebunkport, York Cliffs and Harbor, Ogunquit, Sebago Lake, Hotel Wentworth at New Castle, N. H., and various other points.

A garage for motor livery and storage of cars is operated in connection with the Inn.

BLACK POINT INN will be open from June to October, and provides an ideal summer home for persons of culture and refinement.

For further information, address:

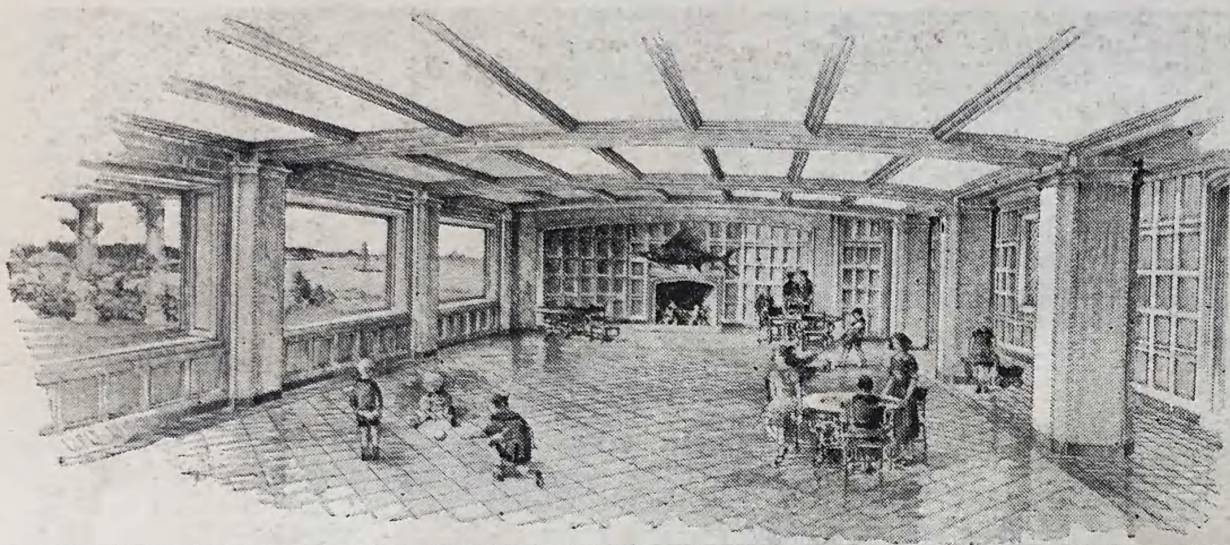
MRS. SAMUEL F. BOYD, *Manager*,
Black Point Inn,
Prout's Neck, Maine



Lounge Showing Fireplace, Main Stairs to Upper Floors and Entrance to Dining Room



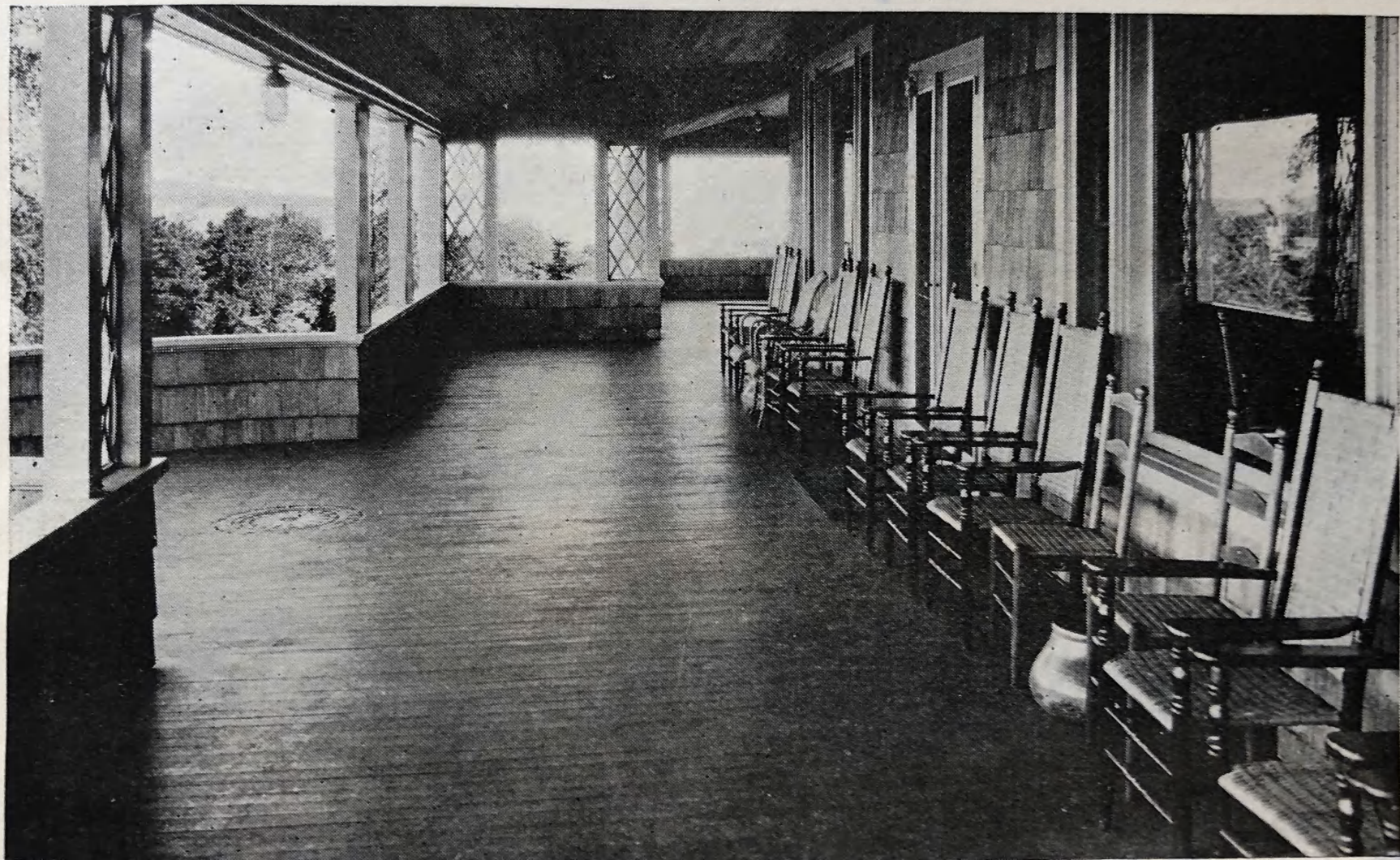
Bedroom



Most unique and appealing, especially to the younger set, is the Playroom (or recreation room), rendered sound proof by special construction, where plays, games and social events can be enjoyed.

The design was inspired by the early English rooms of the late fourteenth, fifteenth, and sixteenth centuries, especially the banquet hall in Sherborne Castle, Dorsetshire. The woodwork is treated as nearly as possible to the English oak of that period, and the floor is imported English quarry tile.

Three beautiful murals occupying one entire side of the room were done by Mr. H. B. Pennell of Boston, who summered at Prouts' Neck in his boyhood.



Porch, Overlooking Bay and Ocean

First to play re-opened (18) course



1 Frances Quimett
2 Buck Withmore
3 Rodney Brown

4 - Burney
Esterbrook
On the Course
1923

Walter & Willard caddies

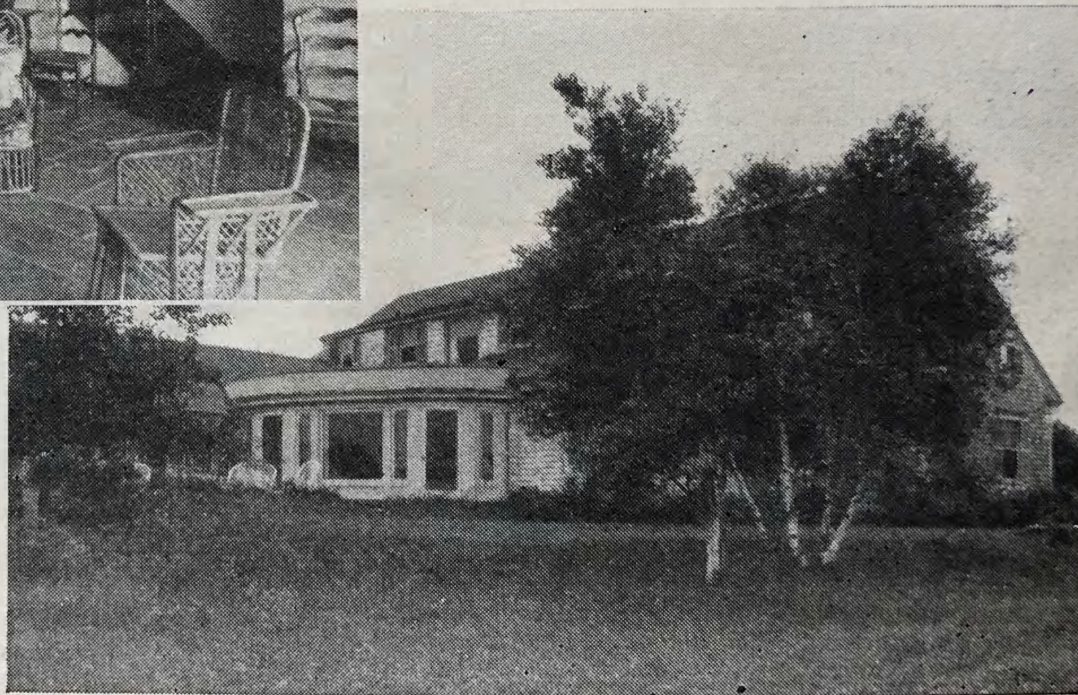


The Bathing Beach

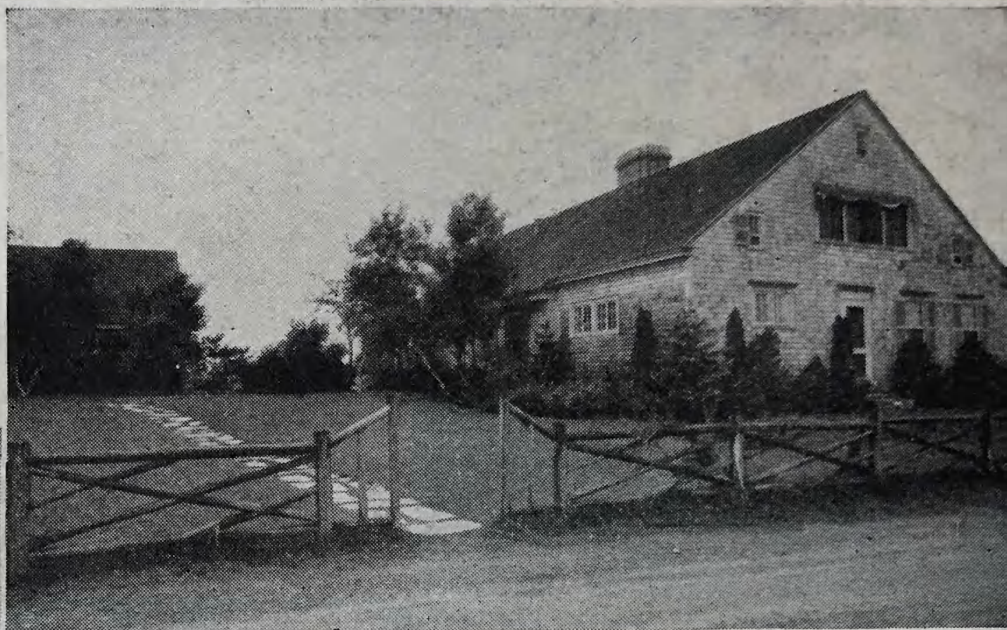
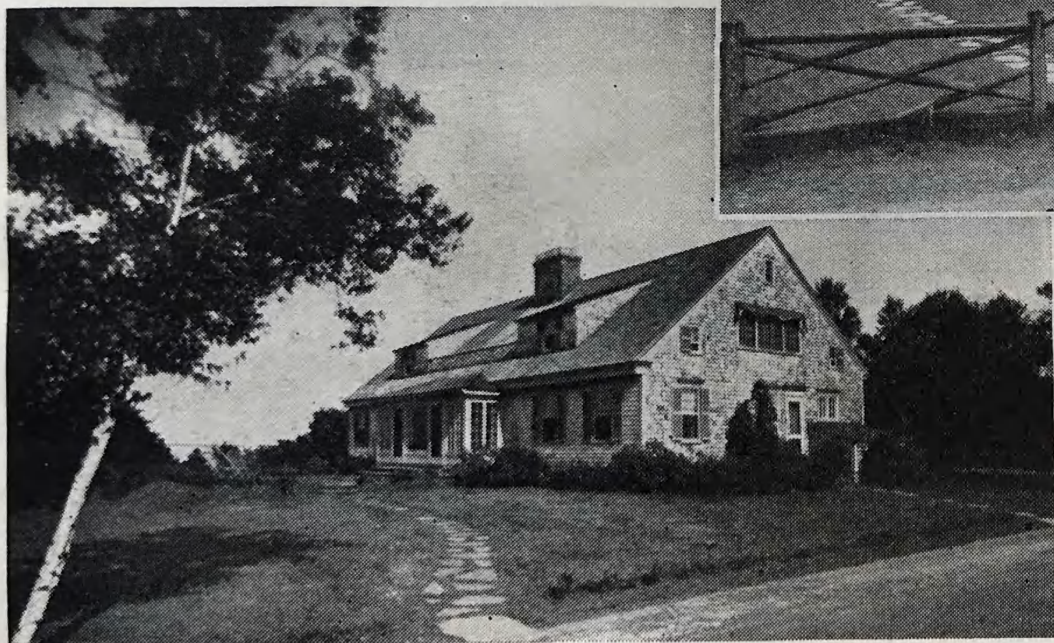


Spacious living rooms, tastefully and luxuriously furnished are in all of the cottages. Large fireplaces add cheerfulness on cool summer evenings so common to Prout's Neck.

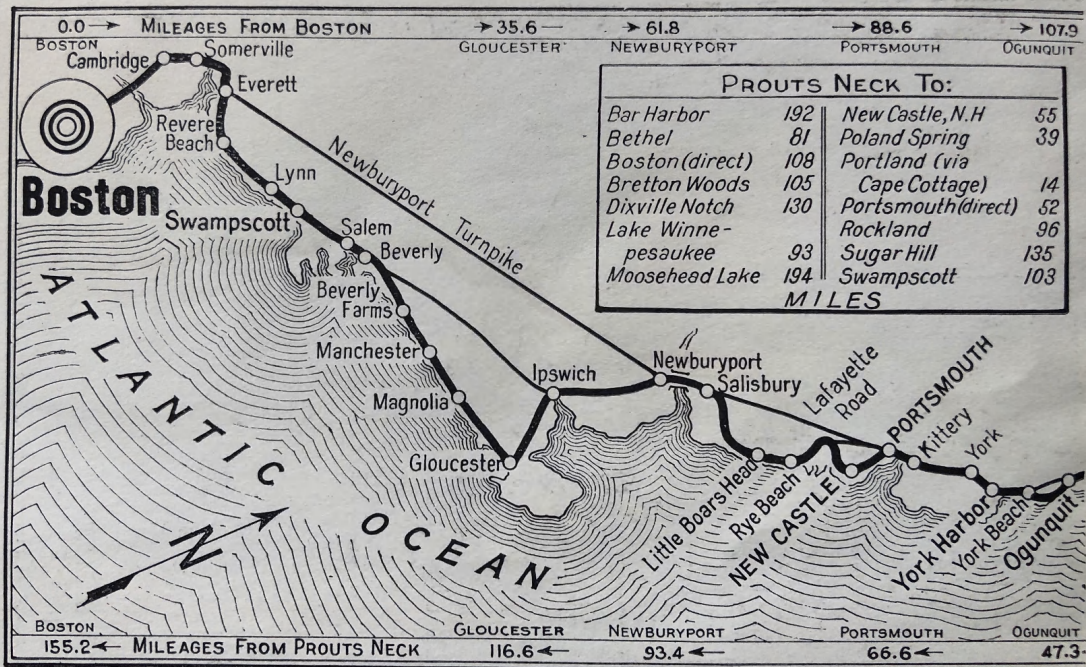
Beautiful views of the bay and open ocean from the Black Point Inn cottages form ever changing panoramas of action. Yachting, bathing and other activities are carried on within view.



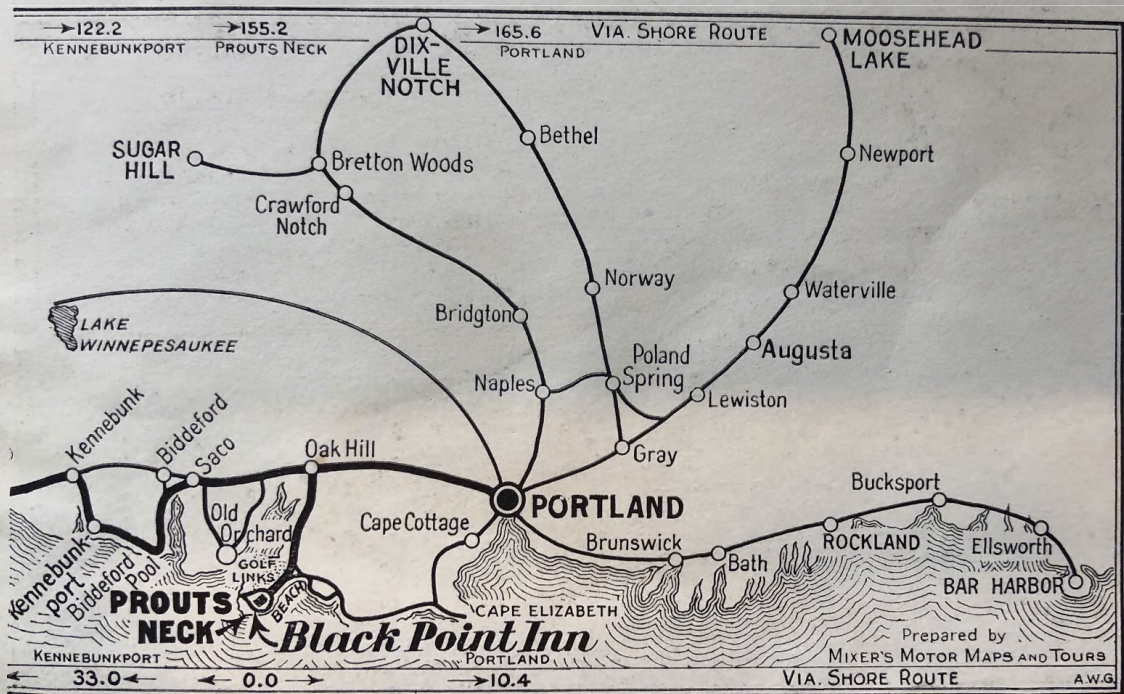
Attractive, well kept lawns surround the cottages. Rock gardens, flag walks and shade trees all form a part of the Black Point Inn's extensive grounds.



Cottages, ideally located on the waterfront, are available for the season for families who wish the advantages of the Inn with the seclusion of the private summer home.



Motor Route To and From the Inn



Motor Route To and From the Inn



The Rocks

