

BLACK★POINT★INN

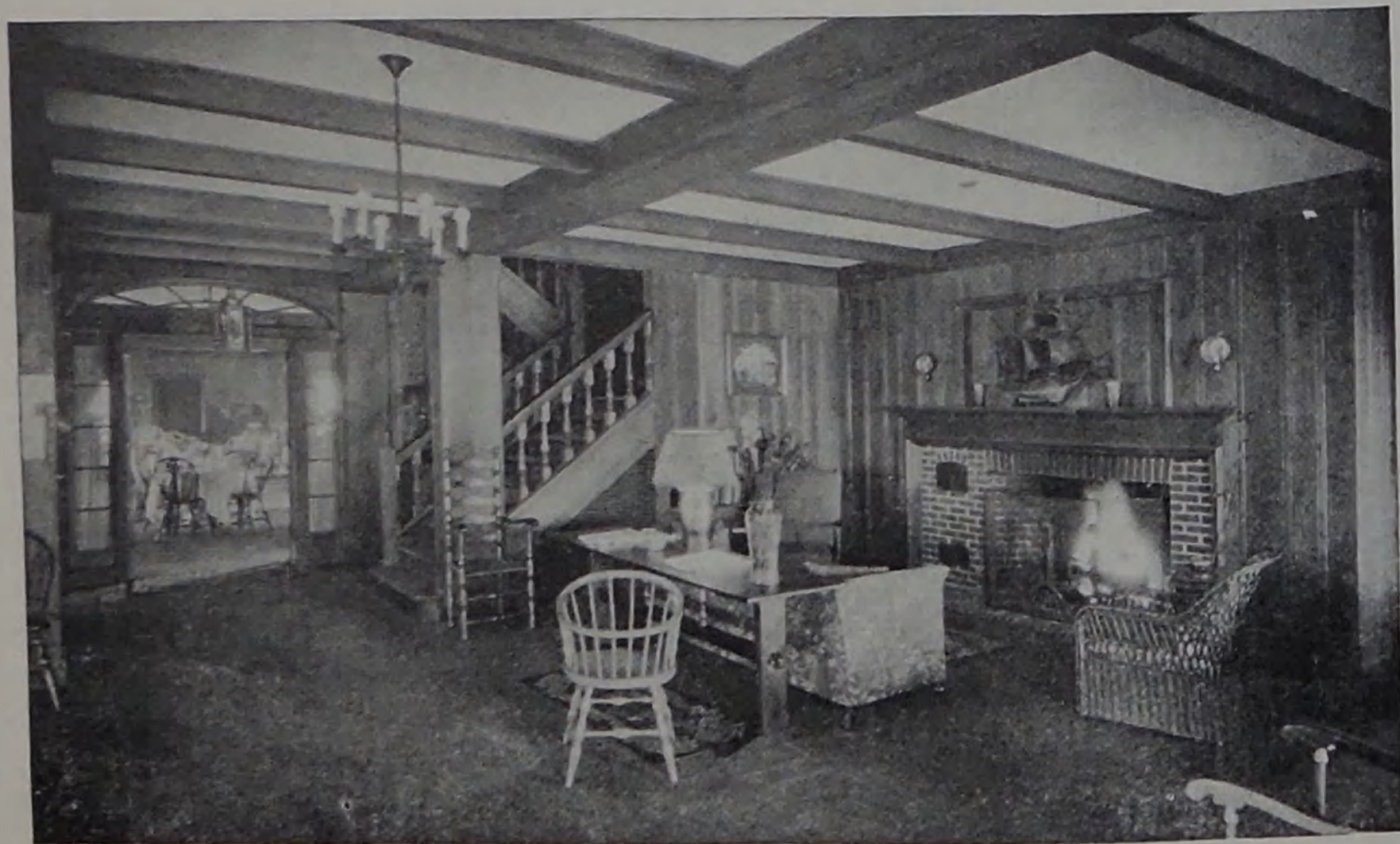


PROUT'S NECK MAINE

BLACK POINT INN
at Prout's Neck, Me.

Announces
The Opening for the summer
season of 1939 1940

John W. Simpson, Manager



Lounge Showing Fireplace, Main Stairs to Upper Floors and Entrance to Dining Room



Living Room



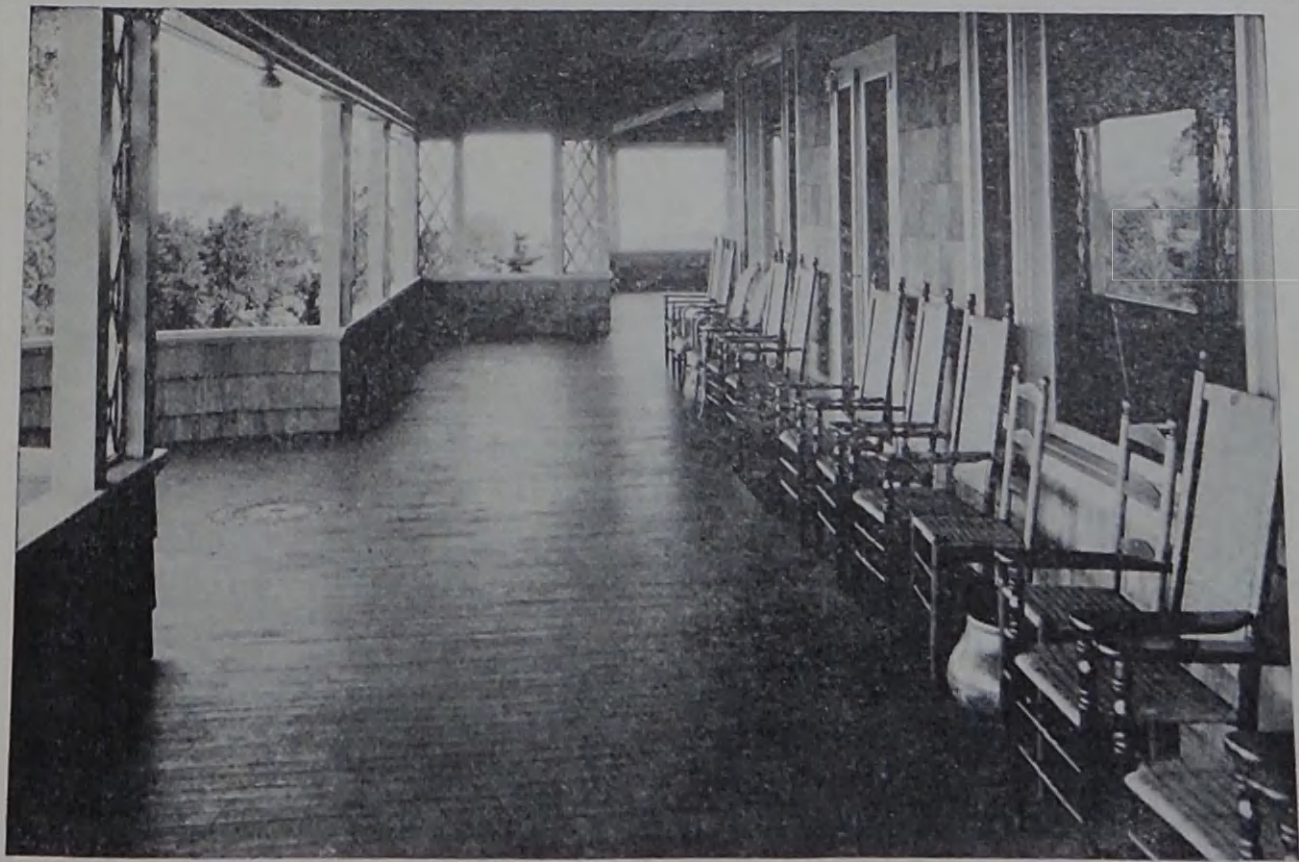
Corner of Dining Room, Looking Towards Bathing Beach

BLACK POINT INN overlooking the ocean and bay accommodates approximately 140 acceptable guests. Its living and drawing rooms are comfortably and tastefully appointed. In addition to open fireplaces, heat is provided on cool days. The attractive dining room is augmented by a tiled kitchen containing all modern equipment. The porches are spacious, including two nicely furnished enclosed sections. Every bedroom has a view of the ocean, with connecting bath and long-distance telephone. There is an elevator available for the convenience of the guests. A garage, operated in connection with the Inn, houses a most modern automobile fire engine.

The drinking water coming from Sebago Lake is famous for its purity and softness.



Bedroom



Porch, Overlooking Bay and Ocean

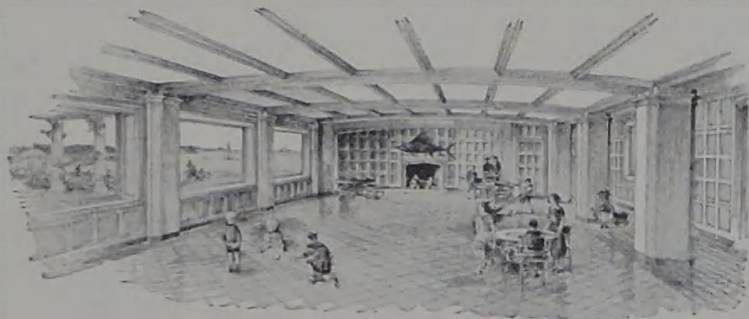


A Prout's Neck Bazaar



Small Boat Racing in the Bay

THE PLAY-ROOM, sound proof, air conditioned, recently constructed for social events, is a reproduction of early English design, especially of the banquet hall in Sherborne Castle, Dorsetshire. Three beautiful murals were done by Mr. H. B. Pennell of Boston and Prout's Neck.

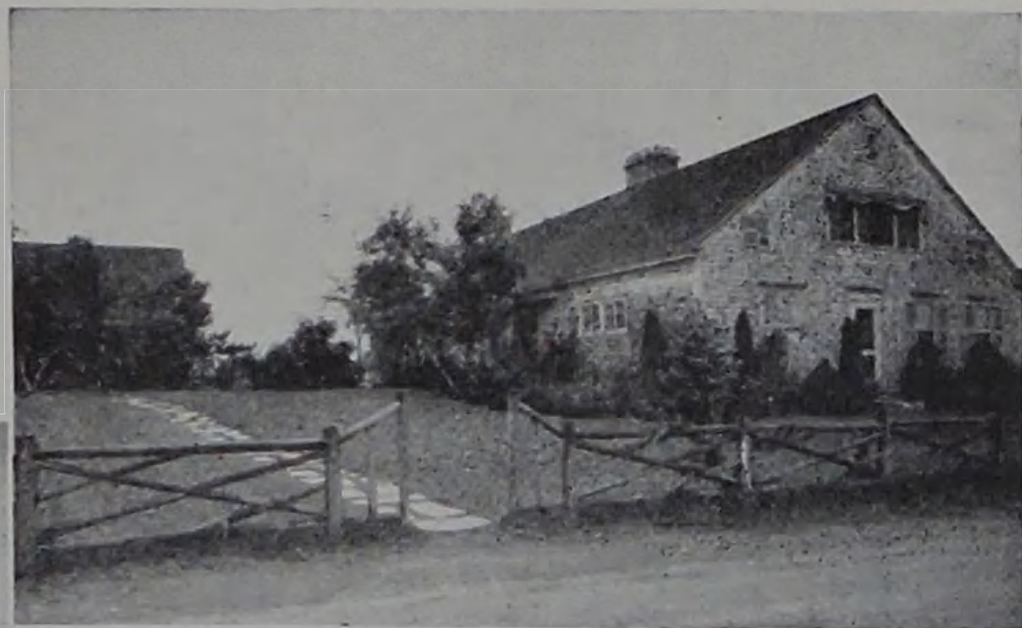


A suitable New York orchestra is selected for the Black Point Inn for the summer months. There is dancing in the soundproof, air-conditioned cocktail lounge between the hours of 5:00 and 6:30 in addition to the usual Saturday night dance at the country club.



A Section of The Bathing Beach

Cottages, ideally located on the waterfront, are available for the season for families who wish the advantages of the Inn with the seclusion of a private summer home. Spacious living rooms, comfortably furnished, are in all of the cottages. Large fireplaces add cheerfulness on cool summer evenings.



Attractive, well kept lawns surround the cottages. Rock gardens, flag walks and shade trees all form a part of the Black Point Inn's extensive grounds.

Beautiful views of the bay and open ocean form ever changing panoramas of yachting, bathing and other activities.

Cottages I and II



On the Course

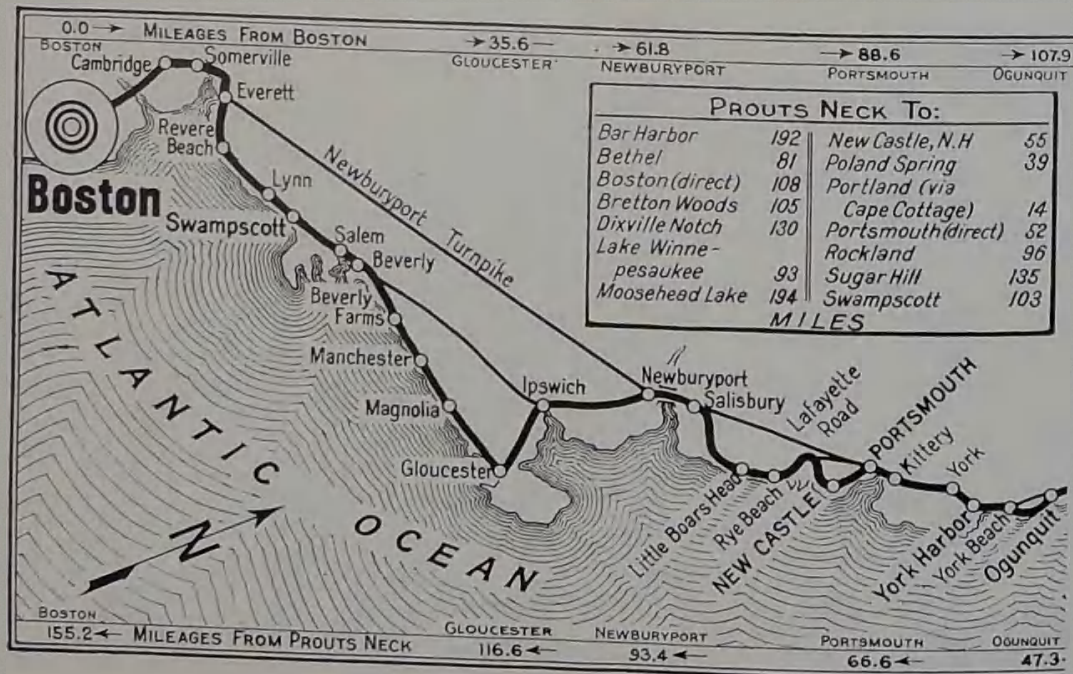
*R*AM ISLAND FARM with its thousand acres consisting of pine forests, bridle paths and magnificent flower gardens is located about six miles from the Inn and is open to its guests. The Farm supplies Black Point Inn with much of its eggs, poultry, milk and vegetables.

The country club and the beach are both within three minutes walking distance of the Inn. The club provides an 18-hole golf course extending along the bay and sand dunes, through the woods, over well-kept fairways, back to the club. There are also ten tennis courts and a practice putting green.

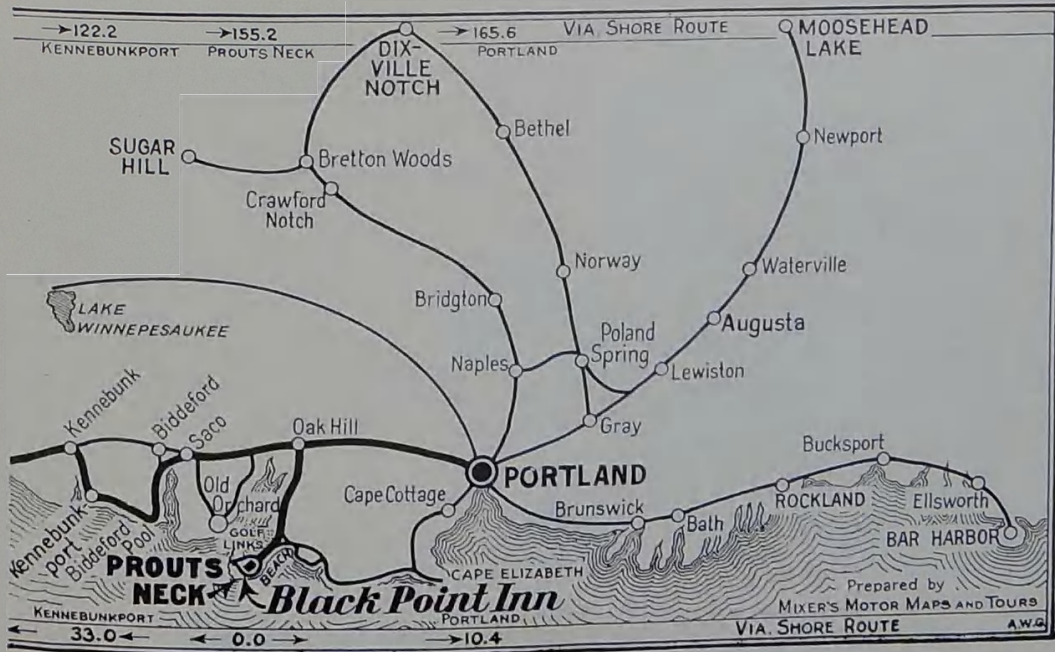
The beaches and the Neck itself are very closely policed by private officers, making walking and bicycling popular.

There are several cottages belonging to the Black Point Inn where guests may have the comfort and privacy of their own home and take their meals at the Inn if desired; also other cottages with accommodations for servants for those who wish to do their own housekeeping.

From the Black Point Inn one can motor to Bretton Woods in the White Mountains, have luncheon and return in time for dinner. Another pleasant drive is to Poland Springs approximately forty miles away. The Balsams at Dixville Notch and Bar Harbor are all within reasonable motoring distance. For short motoring trips along the Maine Coast there are the scenic towns of Kennebunkport, York Cliffs and Harbor, Ogunquit, Sebago Lake and various other points.



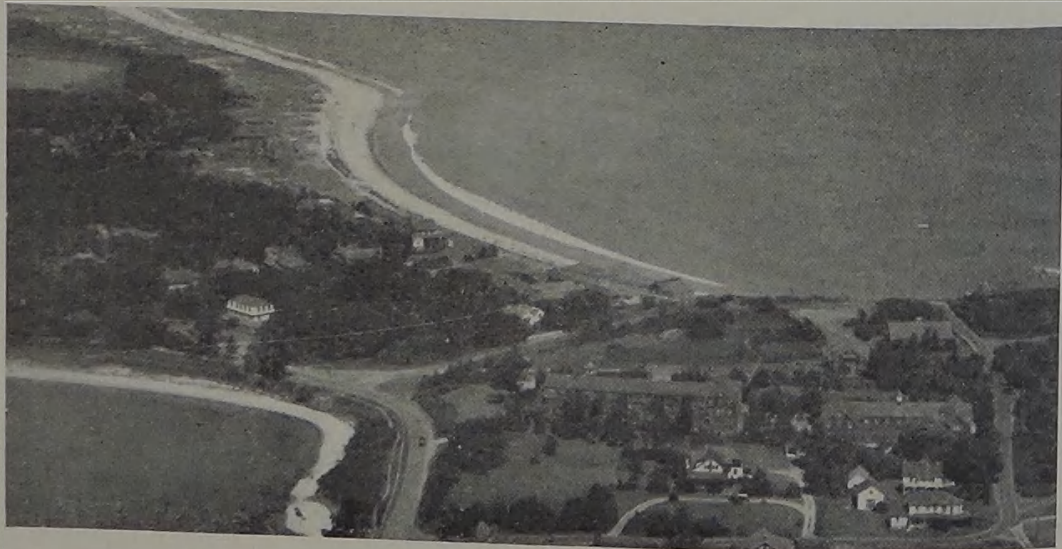
Motor Route To and From the Inn



Motor Route To and From the Inn

ATLANTIC OCEAN AND BATHING BEACH

The
Country
Club
Golf
and
Tennis



THE BAY AND
YACHT HARBOR

BLACK POINT INN
AND COTTAGES

RATES — AMERICAN PLAN

Single rooms with running water	-	-	-	-	-	\$8.00 to \$9.00 daily
Single rooms with bath	-	-	-	-	-	\$10.00 to \$15.00 daily
Double room, bath for single occupancy	-	-	-	-	-	\$12.00 to \$15.00 daily
Double and single room with connecting bath	-	-	-	-	-	\$27.00 to \$30.00 daily
Double rooms with bath	-	-	-	-	-	\$18.00 to \$22.00 daily

Rates are adjustable for a long stay, and for suites for families bringing children and nurses.

The Bar Harbor and State of Maine Express stop at Scarboro Beach for the convenience of the residents of Prout's Neck, thus enabling them to leave New York in the evening and arrive at Prout's Neck at breakfast time. Boston is but two hours distant.

The Black Point Inn will be open from the last of June to the middle of September and provides an ideal summer for persons of culture and refinement.

For further information, address:

BLACK POINT INN

Room 629 10 Post Office Square, Boston, Mass.

