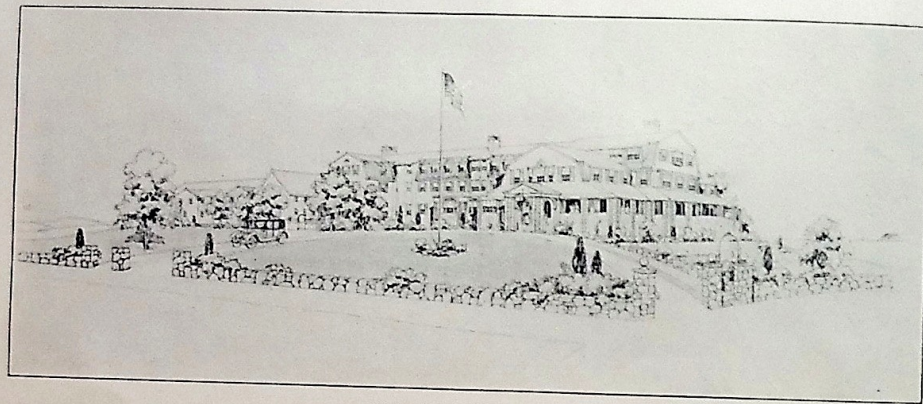


BLACK POINT INN

PROUT'S NECK, MAINE.

BLACK POINT INN
at Prout's Neck, Me.

S. F. BOYD, *Manager*



BLACK POINT INN

PROUT'S NECK (its original name was Black Point, so called from its large growth of hemlock, white pine and fir trees) is one of the most delightful and retiring summer Cottage Colonies on the Maine coast. Its area of 110 acres, one-third of which is taken up by the Sanctuary woods and its marginal way, is pear shaped. The south and southwest coast has high rocks and rugged cliffs, with an inner bay on the west, and on the northwest is the narrow bottle-shaped approach, with one of the finest bathing beaches running eastward for approximately three miles. For many years Prout's Neck has been a resort favored by people of refinement and discrimination, and along the shore are many charming cottages.

An up-to-date, 6,000 yard, eighteen hole golf course runs along the sand dunes, through the woods, across the marshes, again to the dunes and back, and no expense has been spared in making it attractive. In fact, it has been said that for natural beauty, with its view of the marshes, woods and water, it is unrivaled on the coast.

The Country Club is the centre of the summer activities, and its club house, with eight tennis courts, is within three minutes' walk of the Inn.



LOUNGE AND ENTRANCE TO LIVING ROOM

BLACK POINT INN—a De Luxe Hotel—has been built to accommodate the class of people who are being attracted to Prout's Neck by its golf, bathing, sailing and other interesting features.

This is a small hostelry of about sixty rooms, facing the west and inner bay, within 400 yards of the first tee and eighteenth green, and about 300 yards from the bathing beach. Practically every room in the Inn has a water view, while the sunsets from the west porch, across the bay with the White Mountains in the distance, once seen will long be remembered. Every room in the Inn is tastefully furnished, has hot and cold running water, bath connection and a long distance telephone.

The lobby and living room are furnished with every convenience for the comfort of the guests, and on cool days heat is provided in addition to the open fireplaces.

The porches are spacious, including a charmingly furnished glazed porch. The dining room is most attractively decorated, and with its large fireplace and plate glass windows makes a most fitting place for the enjoyment of the fine cuisine.

Our flowers, vegetables, poultry, dairy products, and fruit in season, are obtained from the nearby model showplace, Ram Island Farm.

The kitchen is supplied with all modern sanitary equipment, tiled floor and walls, and electric refrigeration.

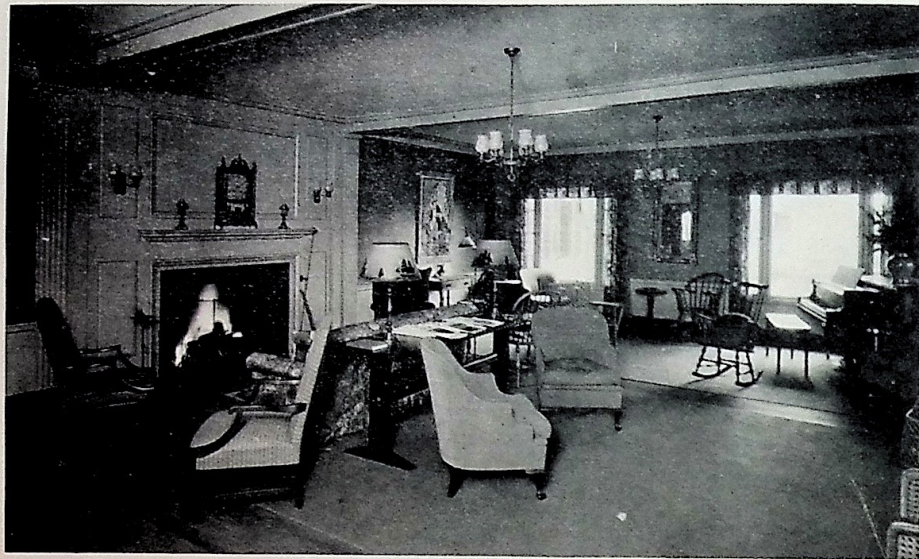


CORNER OF DINING ROOM, LOOKING TOWARDS BATHING BEACH

BLACK POINT INN is about 110 miles by motor from Boston via the Newburyport Turnpike and the Post Road, a very picturesque and interesting route. Or, one can leave Boston via the North Shore and follow through to Rye Beach, York Harbor, York Cliffs, Ogunquit, Kennebunkport, Fortune Rocks, Biddeford Pool and on to Prout's Neck, a matter of approximately 150 miles. This trip is undoubtedly the finest automobile trip on the Atlantic coast. The Inn is about eight miles from Portland, and a night's ride on the sleeper from New York. Trains leave New York about 8 o'clock in the evening and arrive at Scarborough Beach Station at 7:30 the following morning, where you are met by our own motor cars and a ride of twenty minutes brings you to the Inn.

Boats are available both from New York and Boston to Portland, where automobiles from the Inn may be arranged for, and in thirty minutes will transport you and your luggage to the Inn.

It is approximately a three hour run from Boston on the Boston and Maine Railroad. Trains stop at Scarborough Beach, where autos will be waiting to convey you to the Inn.



LIVING ROOM

From BLACK POINT INN one can motor to Bretton Woods, have luncheon and return in time for dinner. It is approximately forty miles to Poland Springs, where one can motor, golf, lunch and golf again, and return for dinner, either direct or via the shore route, in both cases over good, attractive roads.

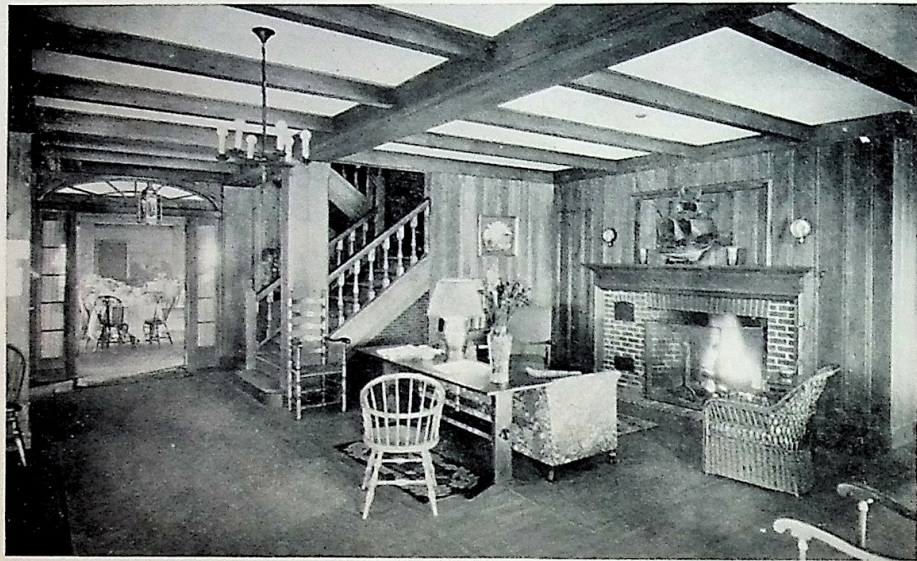
The Balsams at Dixville Notch, the Samoset at Rockland, and Bar Harbor are all within reasonable motoring distance. Lake Winnepesaukee, Moosehead, the Rangeleys, and various other points of interest are all within a short or a long day's journey as one may elect. For short motoring trips we have Kennebunkport, York Cliffs and Harbor, Ogunquit, Sebago Lake, Hotel Wentworth at New Castle, N. H., and various other points.

A garage for motor livery and storage of cars is operated in connection with the Inn.

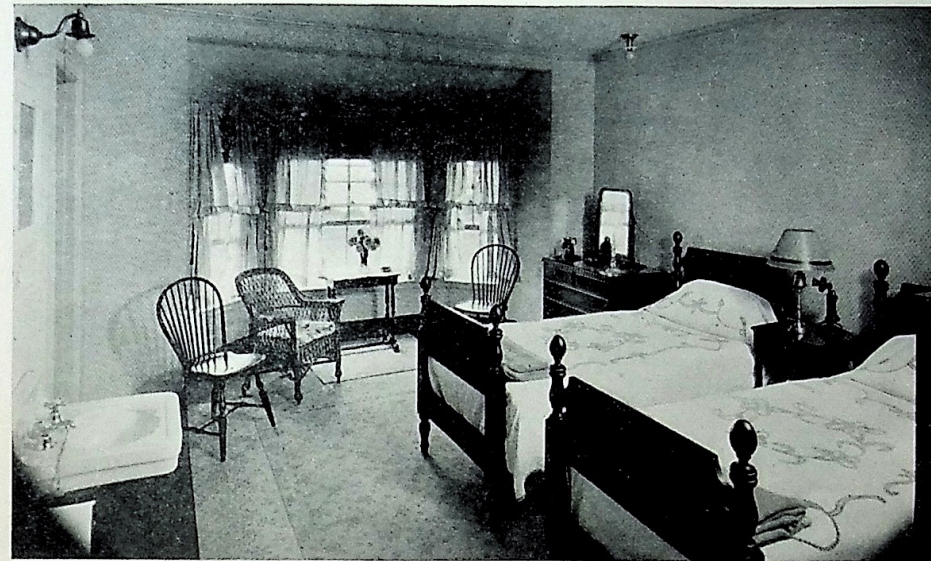
The BLACK POINT INN will be open from June to October, and provides an ideal summer home for persons of culture and refinement.

For further information, address—

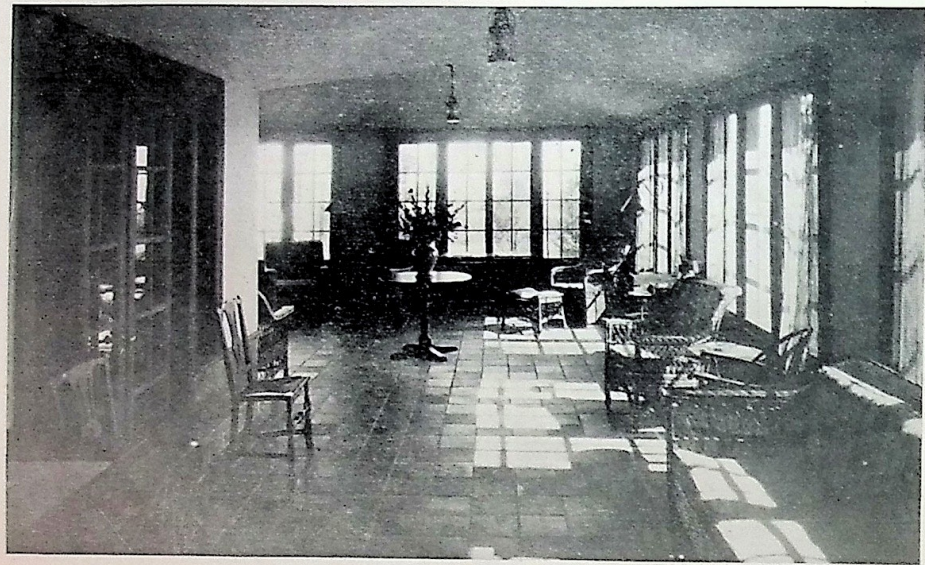
Samuel F. Boyd, Manager,
Black Point Inn,
Prout's Neck, Maine.



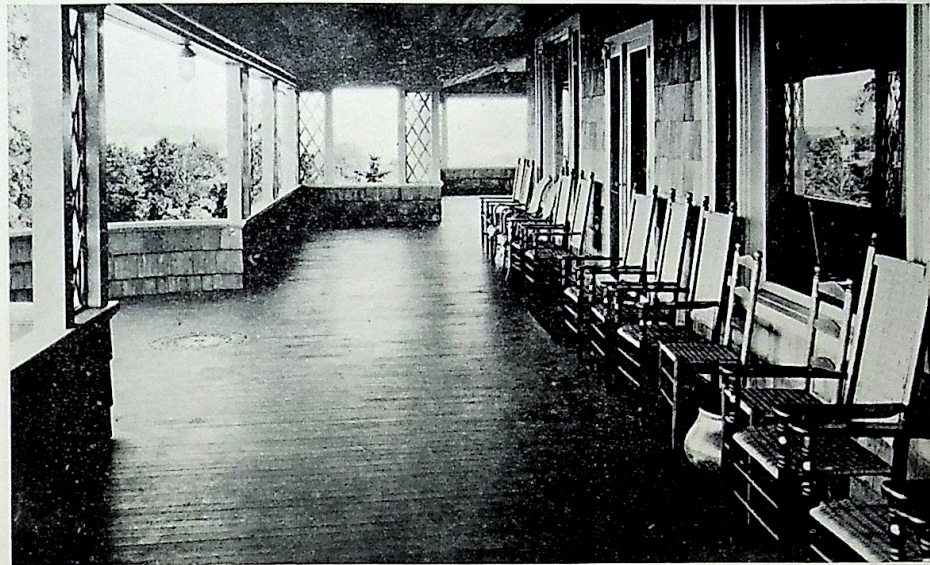
LOUNGE SHOWING FIREPLACE — MAIN STAIRS TO UPPER FLOORS AND
ENTRANCE TO DINING ROOM



BEDROOM



GLAZED PORCH



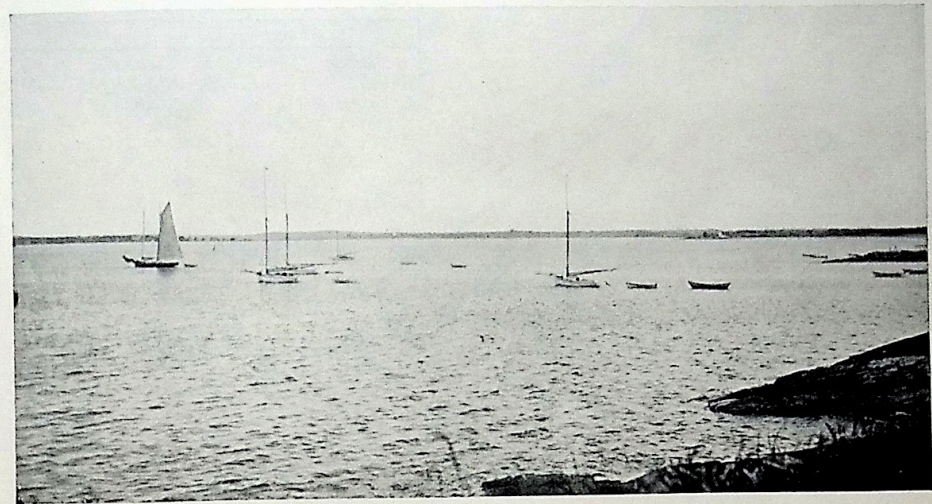
PORCH — OVERLOOKING BAY AND OCEAN



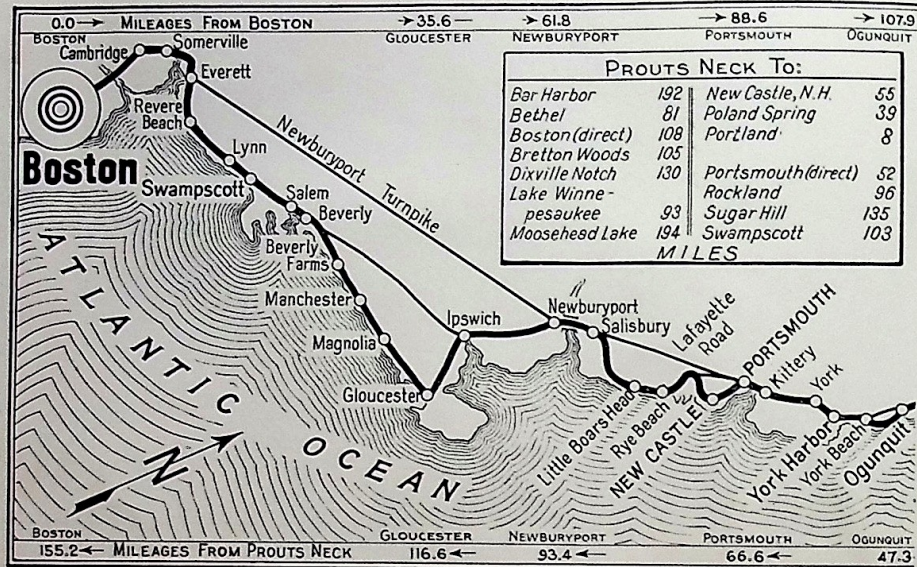
BATHING BEACH FROM THE ROCKS



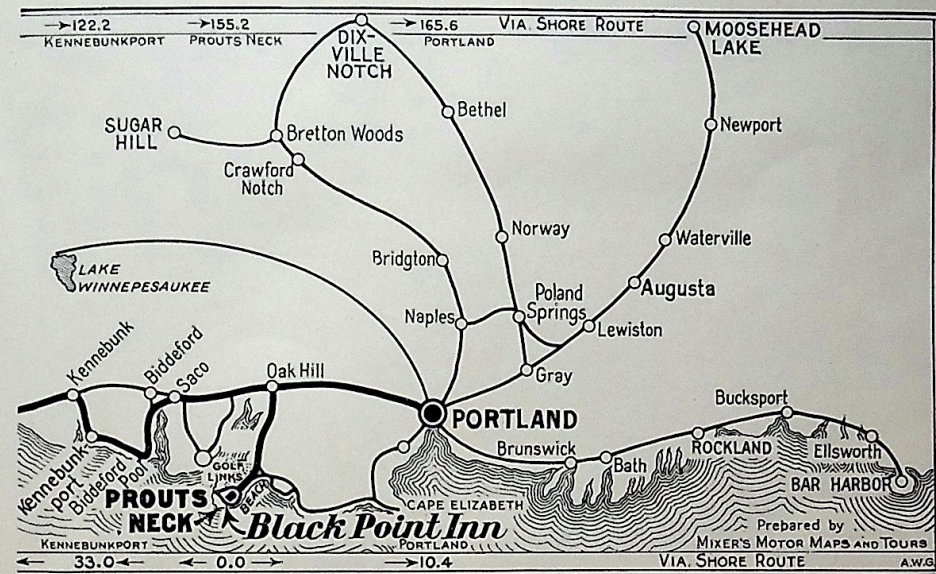
SURF SCENE



GARRISON COVE



MOTOR ROUTE TO AND FROM THE INN



MOTOR ROUTE TO AND FROM THE INN



THE ROCKS

FRED. L. TOWER COMPANY
PORTLAND MAINE

