

SCARBOROUGH

JUNIOR

HIGH

SCHOOL



1963





Our Town Builds A School --

Unique in Maine government at the local level is the Permanent School Building of the Town of Scarborough. Established by the passage of an ordinance at a special town meeting in June of 1960 and charged with the responsibility of "a continuing survey of school building needs," this committee undertook at once a vigorous survey of the school plant and the school program contained therein.

During the school year 1960-1961 it was apparent that the high school building would need to be enlarged. It was also apparent that the elementary school population which was using seven classrooms of an emergency nature would need additional space. Housing of pupils could be accomplished by two projects: an addition to the high school and a new elementary school.

It was then that a study of the school program was undertaken. The facilities provided by the Town in 1954 when the present high school building opened were deemed adequate to continue the established

program at the secondary level for approximately 350 pupils. Though some buildings were antiquated, the standard classrooms at the elementary level were, in general, comparable with elementary classrooms across the country. An examination of the junior high school program in grades Seven and Eight as operated in the Elwood G. Bessey School, however, left much to be desired. Approximately 260 pupils were attending a school built for 175 pupils. The program was largely an academic one which offered few of the exploratory experiences needed by our boys and girls in their early adolescent years.

Slowly a bold, imaginative plan evolved in the committee. A new building for a three year junior high school, complete with well-designed facilities for science, physical education, industrial arts, home economics and library was conceived as a single solution to many problems. Space at the high school would not be needed until about 1970 and the elementary school building could be postponed for three years. This

plan was presented and a bond issue of \$546,000 was authorized at the annual town meeting in March, 1961.

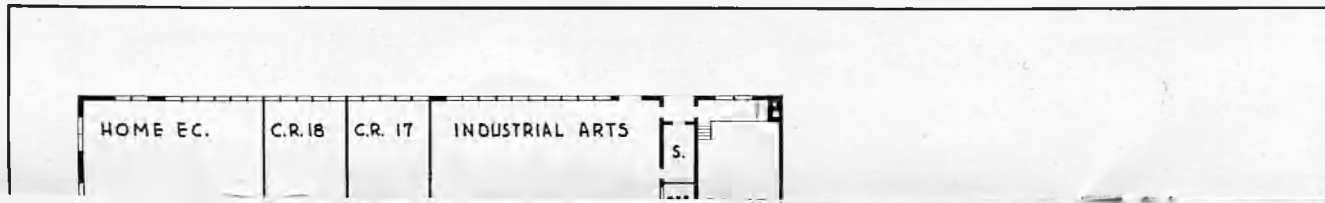
The site, as proposed, was on a knoll beyond the high school and across the athletic field from the school. This location, near the center of the town and on land already owned by the town, was favored by the committee. Since it would be adjacent to the partially developed athletic field additional outdoor athletic facilities would not be needed immediately.

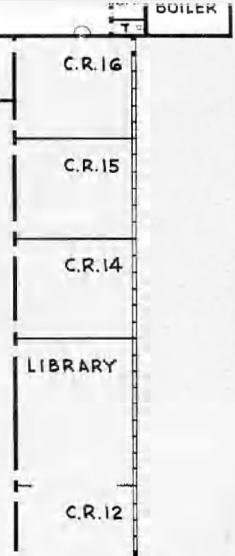
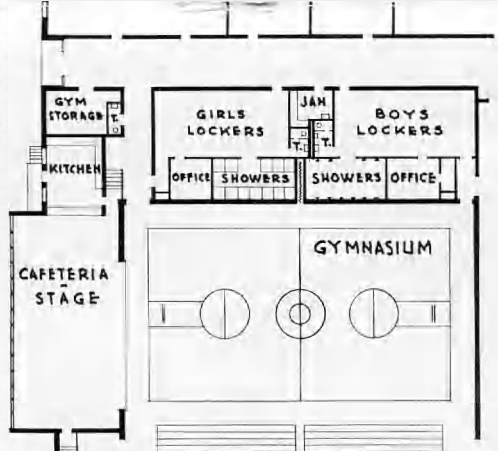
The committee engaged an architect and began planning this facility. During the early fall of 1961 the architect presented a plan for sewage disposal to the state health authorities for a conventional septic tank and leaching bed. This plan was not approved. Within a short time a study was undertaken by the Board of Selectmen to determine the feasibility of constructing sewer lines and a sewage treatment plant which would serve the Oak Hill Area and particularly the high school and the proposed junior high school. The construction of the lines and the plant was authorized by the town and, with financial aid from

the state and federal government, its construction began during 1962.

Meanwhile plans for the new junior high school went out to bid. When the bids were received the authorized appropriation was not believed sufficient for the committee to go ahead with the project. Since the building had been planned to accommodate the number of students expected in grades 7, 8, and 9 within five years, it was proposed that two additional classrooms be added. These two classrooms would tend to postpone the construction of an addition. The committee sought \$56,000 in additional funds which was authorized at the 1962 annual town meeting.

Ground was broken on April 1, 1962 and the building rose rapidly, favored by fine spring and summer weather. On March 5, 1963, though not quite complete, the classroom wing was occupied by Grades 7 and 8, which contained 250 pupils. In September of 1963 the building was opened as a three year junior high school with a staff of 22 teachers and 390 pupils.

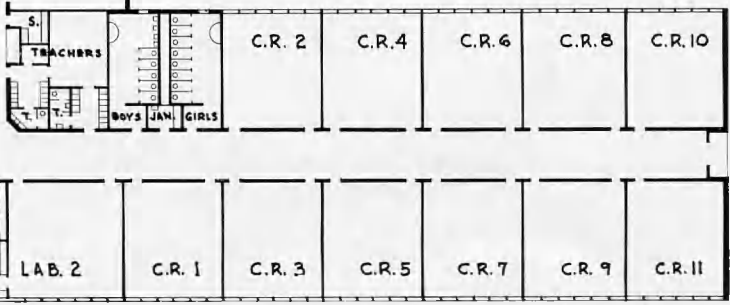
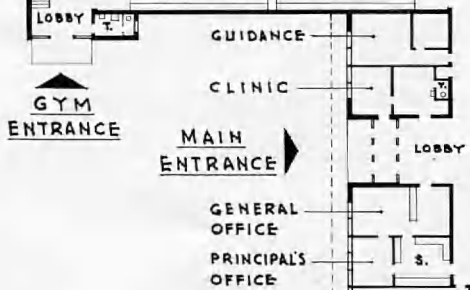
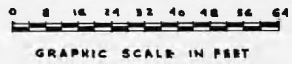




FLOOR PLAN

SCARBOROUGH JUNIOR HIGH SCHOOL

DOUGLAS K. GOODSPEED A.I.A. ARCHITECT



STATISTICAL INFORMATION:

Total Square Feet	39,500
Student Capacity	480
Total Appropriation	\$602,000
Construction Costs:	
Building	\$491,548
Architectural and Engineering Fees	\$31,380
Grading and Paving	\$15,421
Misc.: Water Service, Folding Doors, Shades and Draperies, etc.	\$15,671
Movable Equipment	\$45,980
Square Foot Cost	\$12.49

CONSTRUCTION FEATURES:

Walls: Concrete block, brick faced, concrete block-bearing partitions

Floors: Asphalt tile

Ceilings: Suspended acoustical panels

Lighting: Shielded fluorescent

Heating: Bunker C fuel, low pressure steam, classroom unit ventilators

Roof: Built up roofing, on insulating roofdeck, on steel joist

Toilet Rooms: Ceramic tile

Architect: Douglas K. Goodspeed, A.I.A.

Contractor: Wiley Construction Company

**SCARBOROUGH PERMANENT SCHOOL
BUILDING COMMITTEE**

Sylvia E. Turnbull, Chairman
Otis W. Leary, Vice-Chairman
George J. Clark
Frank S. Eaton
Albert W. Libby
Frank R. Slipp
Robert E. Waterhouse
Frances A. Clark, for the School Committee
Ralph P. Lorfano, for the Selectmen
Thomas S. Vose, Secretary

The committee wishes to acknowledge these former members who gave much of their time and energy while they served:

Harold W. Bennett
Dr. Charles W. Capron
George H. Stanford
Mary H. Perry
Asa J. Baxter
and
Robert B. Lunt, Superintendent of Schools
and Secretary of the Committee, 1960-1962

The Permanent School Building Committee wishes to acknowledge the gift of the flag pole presented in memory of Louis Blotner and the library book cart donated by the Louis Blotner Fund.

The National and State of Maine flags for the auditorium and the outdoor flag have been presented by the Libby-Mitchell Post, American Legion.

The auditorium speaker stand has been presented by the Nonesuch Lodge, Knights of Pythias.

December 8, 1963

