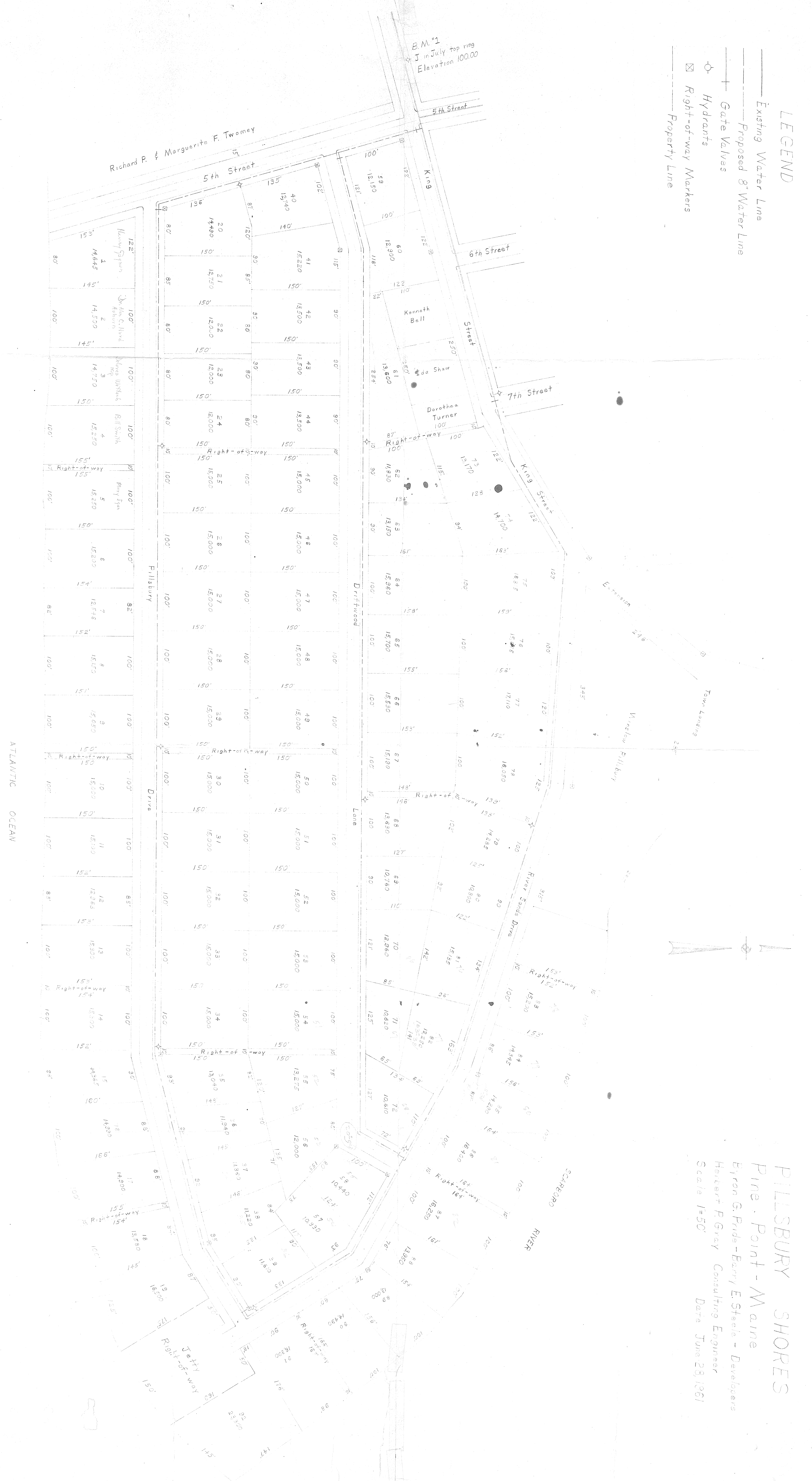


LEGEND

- Existing Water Line
- Proposed 8" Water Line
- Gate Valves
- Hydrants
- ⊗ Right-of-way Markers
- Property Line



PILLSBURY SHORES
 Pine Point - Maine
 Byron G. Pude - Barry E. Steele - Developers
 Hubert F. Gray Consulting Engineer
 Scale 1"=50'
 Date June 28, 1961